



SOUTH CAROLINA
HOUSE OF REPRESENTATIVES
GOVERNMENT EFFICIENCY &
LEGISLATIVE OVERSIGHT COMMITTEE

Law Enforcement, Criminal and Civil Justice
Subcommittee

Chairman Chris Wooten

The Honorable William H. Bailey

The Honorable Kambrell H. Garvin

The Honorable Leon Douglas “Doug” Gilliam

The Honorable Jefferey E. “Jeff” Johnson

A G E N D A

Wednesday, June 4, 2025

10:30 a.m.

Room 110 – Blatt Building

- I. Approval of Minutes of April 3, 2025 Meeting
- II. Discussion of the study of the South Carolina Law Enforcement Division
- III. Adjournment



**SOUTH CAROLINA
HOUSE OF REPRESENTATIVES
GOVERNMENT EFFICIENCY &
LEGISLATIVE OVERSIGHT COMMITTEE**

Chair Jeffrey E. “Jeff” Johnson

Vice-Chair Chris Wooten

Lucas Atkinson
William H. Bailey
Phillip Bowers
Gary S. Brewer Jr.
Kambrell H. Garvin
Leon Douglas “Doug” Gilliam

Wendell K. Jones
Kathy Landing
John R. McCravy III
Annie E. McDaniel
Timothy A. “Tim” McGinnis
Travis A. Moore

Scott Montgomery
Michael Rivers
Richard B. “Blake” Sanders
Marvin “Mark” Smith
Robert Williams
Paul B. Wickensimer

Lewis Carter
Research Director

Cathy Greer
Administrative Coordinator

Roland Franklin
Legal Counsel

Charlie LaRosa
Research Analyst

Riley McCullough
Research Analyst

Post Office Box 11867
Columbia, South Carolina 29211
Telephone: (803) 212-6810 Fax: (803) 212-6811
Room 228 Blatt Building

MEETING MINUTES

**Thursday, April 3, 2025
Thirty Minutes Following Adjournment of the House
Room 110 – Blatt Building**

Archived Video Available

- I. Pursuant to House Legislative Oversight Committee Rule 6.7, South Carolina ETV was allowed access for streaming the meeting. You may access an archived video of this meeting by visiting the South Carolina General Assembly’s website (<http://www.scstatehouse.gov>) and clicking on Committee Postings and Reports, then under House Standing Committees click on Legislative Oversight. Then, click on Video Archives for a listing of archived videos for the Committee.

Attendance

The Law Enforcement and Criminal and Civil Justice Subcommittee meeting was called to order by Chair Chris Wooten on Thursday, April 3, 2025, in Room 110 of the Blatt Building. Representative Kambrell H. Garvin, Representative Leon D. “Doug” Gilliam, and Representative William H. Bailey were present for all or a portion of the meeting. Representative Jeffrey E. “Jeff” Johnson was not present.

Minutes

- I. House Rule 4.5 requires standing committees to prepare and make available to the public the minutes of committee meetings, but the minutes do not have to be verbatim accounts of meetings.

Approval of Minutes

- I. Representative Bailey made a motion to approve the meeting minutes from prior meeting. A roll call vote was held, and the motion passed.

Rep. Garvin's motion to approve meeting minutes.	Yea	Nay	Not Voting
Rep. Wooten	✓		
Rep. Johnson			✓
Rep. Garvin			✓
Rep. Gilliam	✓		
Rep. Bailey	✓		

Discussion of the South Carolina Law Enforcement Division

- I. Prior to beginning his testimony, Chair Wooten reminds SLED's Director of Internal Operations, Don Royal, that he was sworn in at the February 11, 2025, meeting and that he remains under oath.
- II. Director Royal then begins his overview of SLED's internal operations, including the budget, human resources, accounting, and procurement. Throughout the presentation, members ask Director Royal questions and Director Royal and, when warranted, Chief Keel, responds.

Adjournment

- I. There being no further business, the meeting is adjourned.

STATE LAW ENFORCEMENT DIVISION (SLED)



ABOUT

On May 14, 1935, the General Assembly created the South Carolina Law Enforcement Division to enforce the state liquor law, assist any law enforcement officer in the detection of crime, along with the enforcement of the state's criminal laws. Funding was provided for 21 new officers to the existing three members of the State Constabulary.

MISSION

The primary mission of SLED is to provide quality manpower and technical assistance to all law enforcement agencies in South Carolina to ensure that every citizen in the State of South Carolina is afforded an equal level of law enforcement service. SLED is also tasked with protecting and preserving the safety, integrity, and security of South Carolina's citizens and all statewide public resources, infrastructure, and data. SLED also conducts timely, thorough, and professional criminal investigations on behalf of the State of South Carolina along with many other statutory roles and responsibilities.

VISION

SLED seeks to be the premier law enforcement agency in the State of South Carolina so as to ensure every citizen in South Carolina is provided an equal level of law enforcement services.

SUCSESSES

- ❖ Experienced staff with a wide range of talents capable of handling a variety of tasks and projects.
- ❖ Collaboration and coordination with regional and federal counterparts to provide the highest quality of service.
- ❖ Personnel's dedication, ability and involvement in the law enforcement profession as subject matter experts in their own individual areas of expertise.
- ❖ Commitment to maintaining accreditation to ensure law enforcement partners have access to the best forensic analysis possible.

DEPARTMENTS

- ❖ Alcohol, Narcotics & Vice Services
- ❖ Criminal Justice Information Services
- ❖ South Carolina Information and Intelligence Center
- ❖ Counterterrorism
- ❖ Forensic Services
- ❖ Homeland Security
- ❖ Investigative Services
- ❖ Regulatory Services

EMPLOYEES

758

Authorized FTEs

FUNDING

\$148,137,395

Total Funds

CHALLENGES

- ❖ Personnel turnover
- ❖ Succession planning issues
- ❖ Reliance on others and outside factors causing a delay in case progress.
- ❖ High volume of plant material testing cases has caused a time delay in receiving results.
- ❖ Continued use of an outdated case management system.

INFORMATION TECHNOLOGY

OVERVIEW

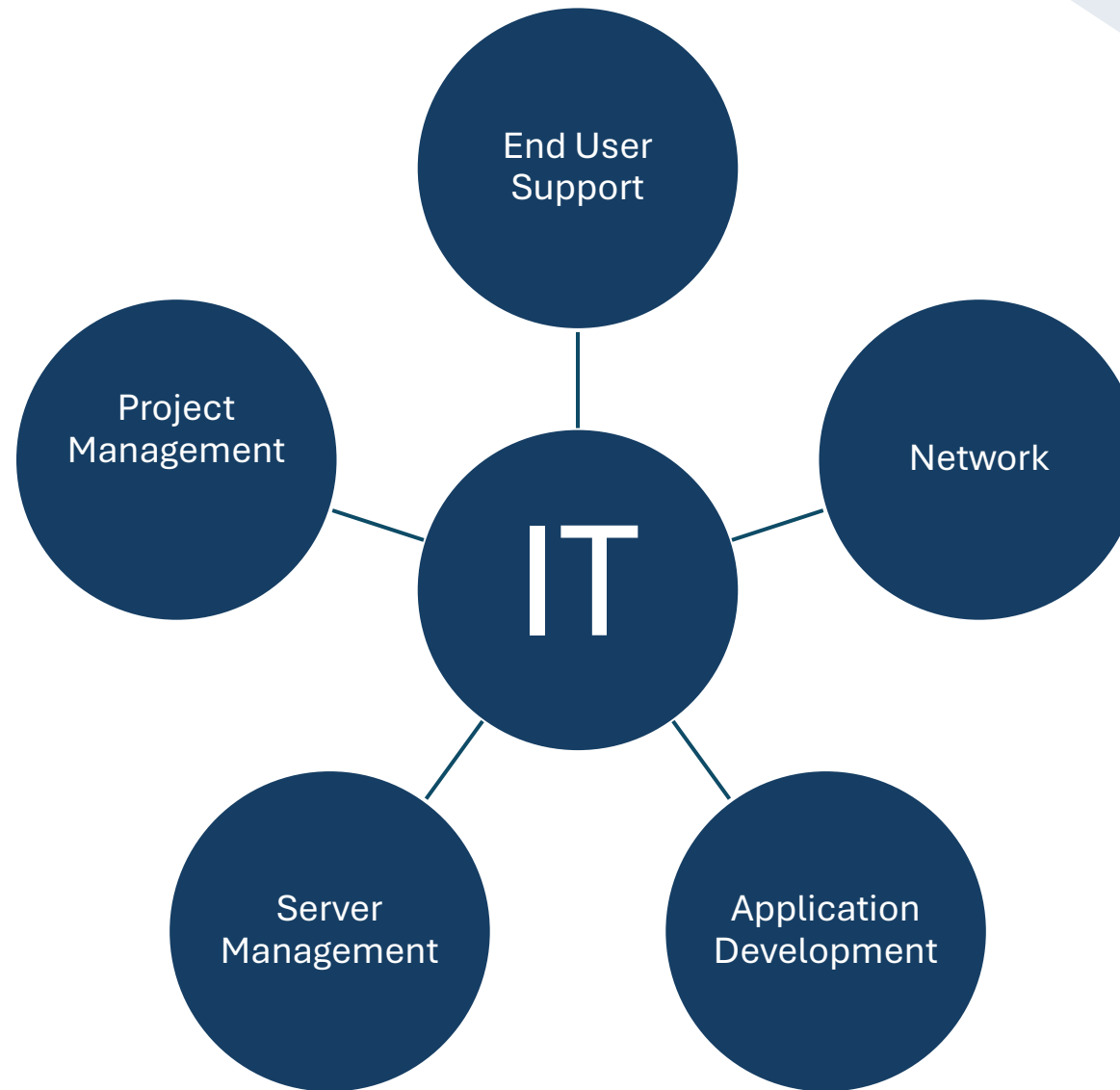


Understanding the Function, Team and Their Roles

Ryan Truskey

Chief Information Officer, SC CIC Director, SLED

IT Functionality



End User Support



❖ Purpose:

- Provides support for IT-related issues within the organization.
- Serves as the primary point of contact for troubleshooting and resolving technical problems.
- Ensures timely assistance and minimizes downtime for end-users.

❖ Key Responsibilities:

- Answering and resolving user queries related to software, hardware, and network issues.
- Escalating more complex issues to appropriate teams or specialists.
- Maintaining documentation of common issues and solutions to improve future support.

Network



❖ Purpose:

- Manages and maintains the organization's network infrastructure.
- Monitors network performance and troubleshoots issues.
- Ensures reliable and secure communication between devices and systems.

❖ Key Responsibilities:

- Designing and implementing network solutions.
- Managing firewalls, VPNs, and other security protocols.
- Maintaining network hardware like routers, switches, and servers.

Application Development



❖ Purpose:

- Develops, tests, and maintains software applications.
- Provides custom solutions to meet the organization's specific needs.
- Ensures applications are scalable, secure, and user-friendly.

❖ Key Responsibilities:

- Writing and debugging code for new and existing applications.
- Collaborating with users and other departments to gather requirements.
- Performing software upgrades and patch management



Server Management

❖ Purpose:

- Manages and maintains the organization's servers and data centers
- Ensures the availability, reliability, and security of server environments.
- Performs regular backups, updates, and disaster recovery planning.

❖ Key Responsibilities:

- Installing, configuring, and maintaining servers and operating systems.
- Monitoring server performance and optimizing resource usage.
- Implementing and enforcing security policies and protocols

Project Management



❖ Purpose:

- Oversees IT projects from inception to completion.
- Ensures projects are delivered on time, within scope, and within budget.
- Manages resources, risks, and timelines effectively.

❖ Key Responsibilities:

- Defining project scope, objectives, and deliverables.
- Coordinating with stakeholders across departments.
- Monitoring project progress and adjusting as necessary.

IT Initiatives



1. Improve Customer Service:

Enhance response times and user satisfaction through better support practices and tools. Implement a self-service portal.

2. Convert Legacy Systems into Modern Applications:

Transition outdated systems to newer, more efficient technologies to improve performance and scalability.

3. Replace Aging Hardware and Network:

Upgrade or replace old or end-of-life hardware and network equipment to ensure reliability and security.

4. Build Disaster Recovery (DR) Plan:

Develop and implement a comprehensive disaster recovery plan to ensure business continuity in case of emergencies.

5. Implement Zero Trust Network:

Establish a Zero Trust security model to enhance network security by verifying all users and devices before granting access to resources.

INFORMATION SECURITY

OVERVIEW

Understanding the Function, Team and Their Roles



SLED Information Security Team



•Activities:

- Respond to security incidents
- Strengthen system security
- Implement, maintain, and monitor state-of-the-art security tools
- Train the SLED user base on security methodology
- Track and facilitate vulnerability remediation
- Assist all of SLED with security issues and questions
- Document security plans, policies, and procedures



SLED Information Security Initiatives

- Prioritize vulnerability remediation by discovering gaps and resolving timely
- Align SLED security plans, policies, processes and procedures with industry standards
- Ensure secure backup practices and improve disaster recovery initiatives
- Continuously move the enterprise to a state-of-the-art zero-trust model.
- Maintain a comprehensive asset inventory detailing software and hardware that exists in the SLED infrastructure

GOVERNANCE RISK AND COMPLIANCE (GRC) UNIT



Understanding the Function, Team and Their
Roles

Governance, Risk, and Compliance Unit (GRC)



Main Responsibilities:

- Conduct Triennial Information Technology Security (ITS) audits
- Evaluate security posture for new CJIS access
- Work with SC CIC during incident response

Governance, Risk, and Compliance Unit (GRC)



Top Non-Compliant Issues:

- Audit Logging and Retention
- Network Diagram
- Incident Response Policy
- Security Awareness Training
- Security Addendums

SOUTH CAROLINA CRITICAL INFRASTRUCTURE CYBERSECURITY (SC CIC)



Ryan Truskey

Chief Information Officer, SC CIC Director, SLED

SC CIC Task Force



SC LAW ENFORCEMENT DIVISION
Oversees the SC CIC Program

SC DEPARTMENT OF ADMINISTRATION
Division of Information Security



SC NATIONAL GUARD
125th Cyber Protection Battalion



US SECRET SERVICE
Cyber Fraud Task Force



SC EMERGENCY MANAGEMENT DIVISION
Cyber Incident Consequence Management



SC ELECTION COMMISSION
Election and Voter Information Security



US DEPARTMENT OF HOMELAND SECURITY
Office of Intelligence and Analysis



US DEPARTMENT OF HOMELAND SECURITY
Cybersecurity & Infrastructure Agency



FEDERAL BUREAU OF INVESTIGATIONS
Cyber Squad

PRIVATE SECTOR PARTNERSHIPS



PRISMA
HEALTHSM



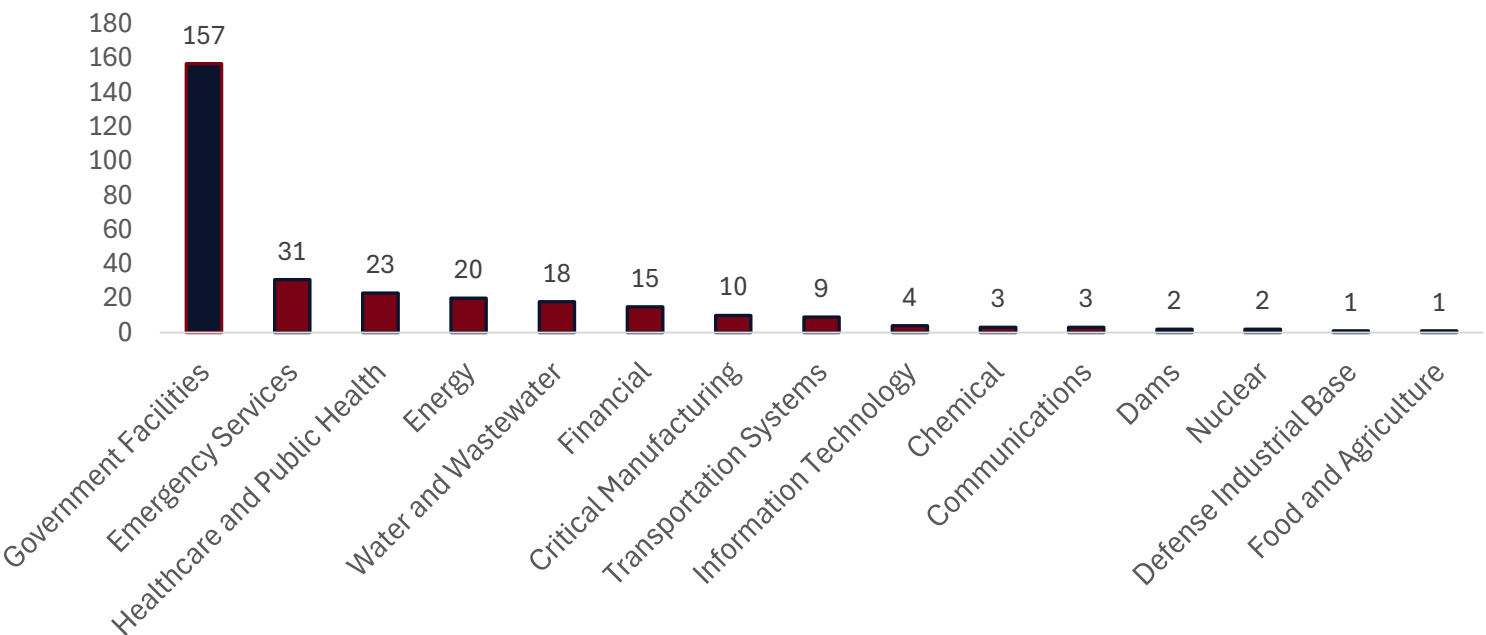
**Dominion
Energy[®]**



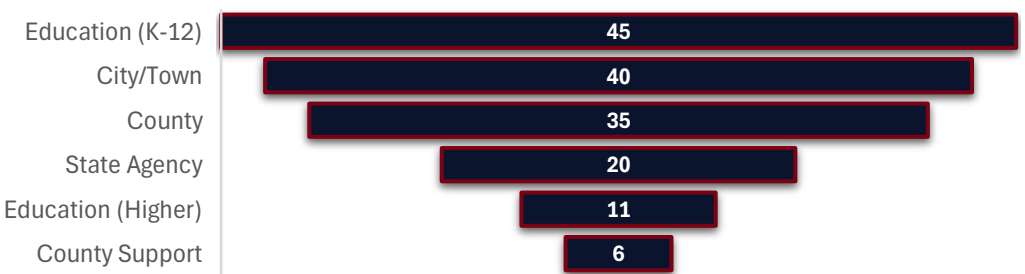
SOUTHEASTERN FREIGHT LINES



SC CIC Organizations by Sector in 2024



Government Facilities Sector Breakdown



CYBER LIAISON OFFICER (CLO)



Ransomware hits sensitive data like

After a recent ransomware attack, sensitive data

South Carolina ransomware

The South Carolina State University network recovery continues, ransomware

Oct 27, 2021 — South Carolina State University says it continues to

South Carolina County Still Reeling

NEWS 1 NOV 2021
Cyber-Incident at South Carolina

YOU HAVE BEEN HACKED
DOWN WITH ISRAEL الموت لإسرائيل
EVERY EQUIPMENT "MADE IN ISRAEL" IS CYBER AVENGERS LEGAL TARGET



South Carolina credit union says 240,000 impacted by recent cyberattack

S.C. officials assess last month's PowerSchool cyberattack

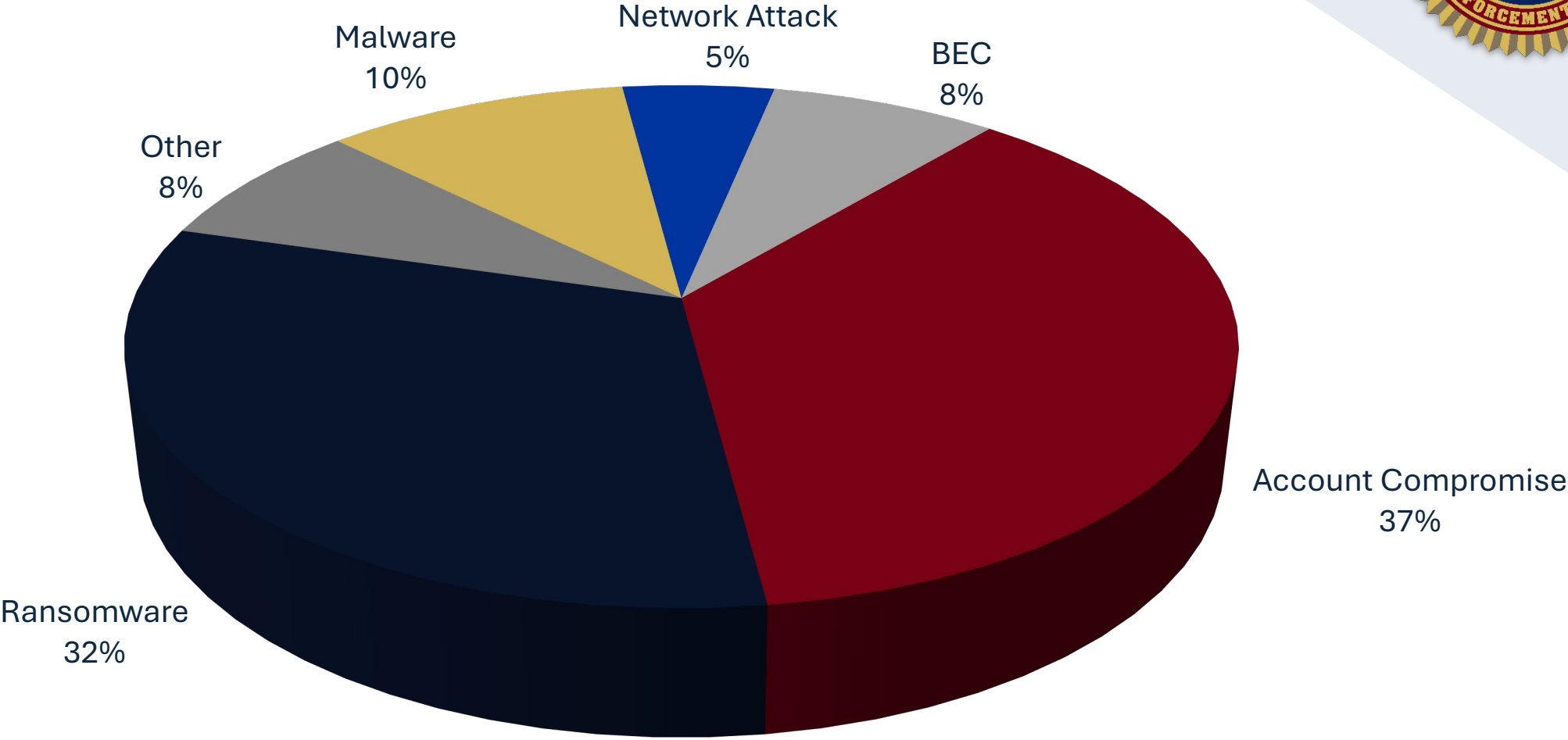
CHARLESTON COUNTY NEWS
Charleston County School District says cyber disruption came from unknown hackers

Cyberattack disrupts car dealership operations across the US, including Greenville, South Carolina

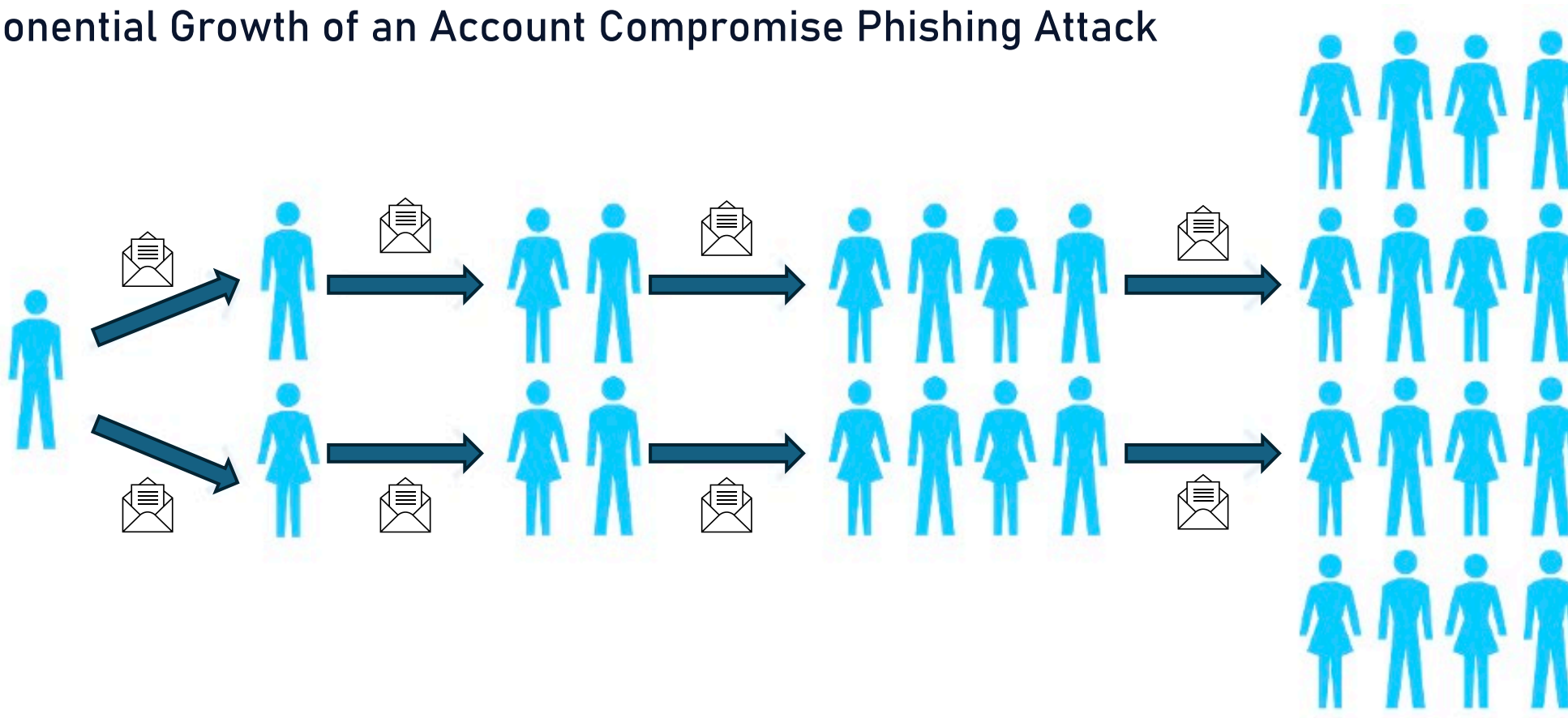
Pickens school district says cyberattack caused internet outages district-wide



Types of Incidents in SC in 2024



Exponential Growth of an Account Compromise Phishing Attack





wexglows

New User

MEMBER

Posts4

Threads1

JoinedApr 2021

Reputation0

5 hours ago

#1

Hello there,

In all countries of the world we have access information of many companies. We have the vpn access and domain administrator rights directly.

According to your wishes, companies in the country and price range of your choice can be searched or you can buy the ones that are suitable for you from what we have obtained.

Details: 2nd largest shoe manufacturer in the world "TW"
 Revenue: 56 Billion \$
 Employees: 10.000 >>
 User: 1480
 Client: 8148
 Access Type: VPN, RDP, Domain Admin Privileges

Details: Construction, Building company, Company in "USA"
 Revenue: \$79 Million
 Employees: 350
 User: 100
 Client: 115
 Access Type: VPN, RDP, Domain Admin Privileges
 Category: Construction, Building, Buildin Design

Details: Logistics Services, Transportation, Company in USA
 Revenue: 7.4 Million
 Employees: 36
 User: 40+
 Client: 40+
 Access Type: VPN, RDP, Domain Admin Privileges
 Category: Business Services, Cargo, Logistics Services

Please contact for more access and details.

Initial access brokers
get into networks by using
compromised credential or
exploits on RDP or VPN devices

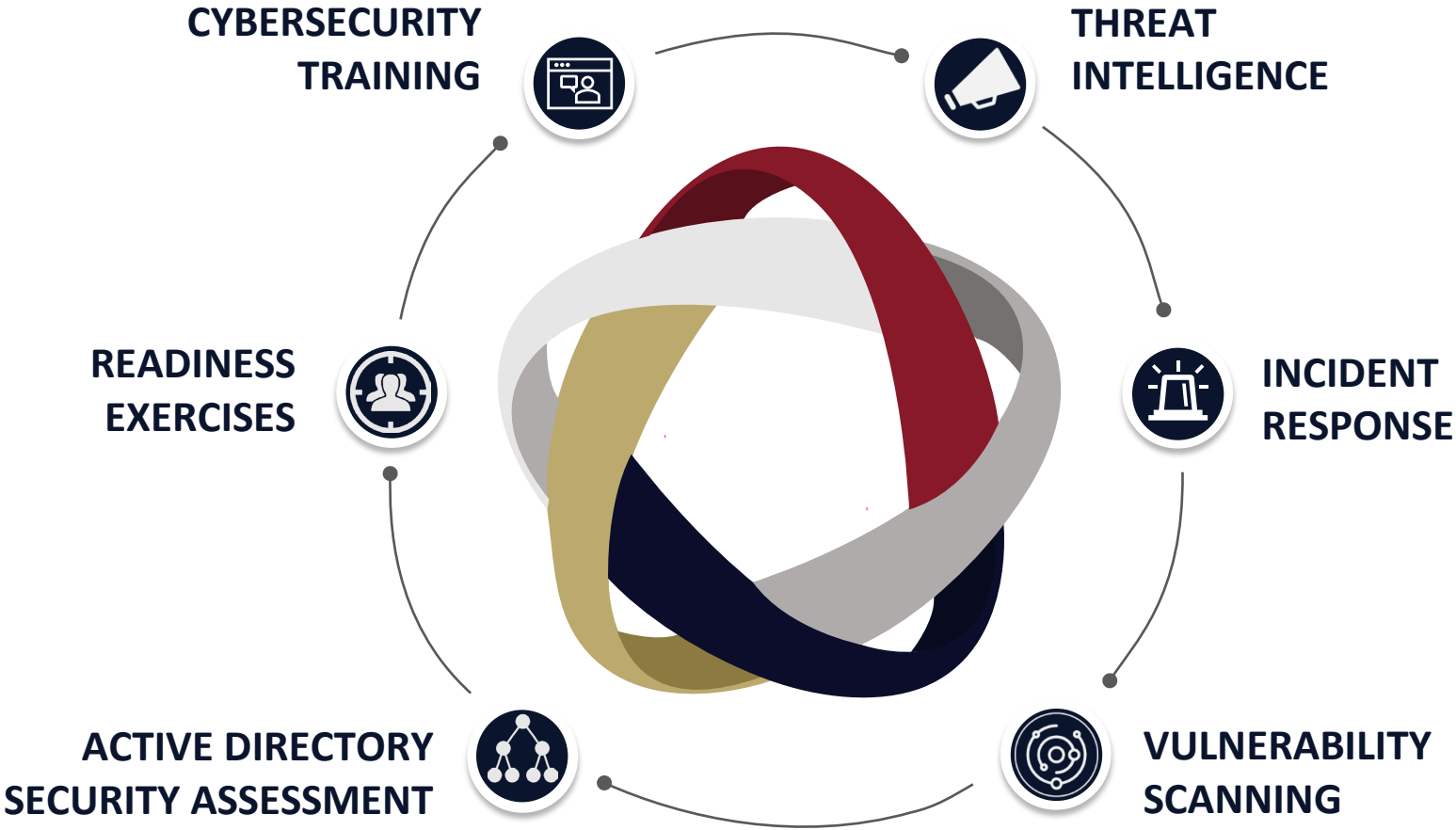


They sell access to ransomware
groups or APTs



New group takes it from there, moving
around victim's network, taking data, &
eventually deploying encryption

SC CIC SERVICES





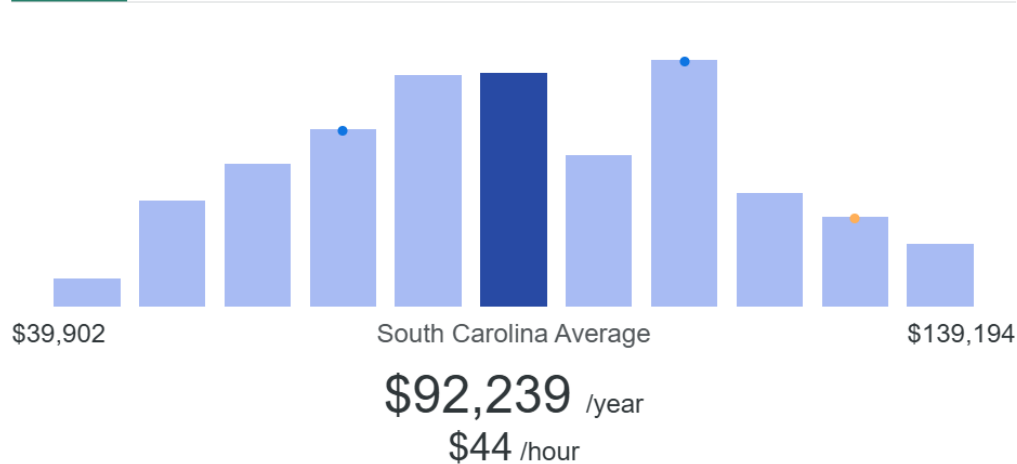
Procurement Challenges:

- Threat landscaping is changing fast
- Grant funding timelines
- Need for innovation speed



Entry Level Cyber Security Analyst Salary in South Carolina

Yearly Monthly Weekly Hourly Table View



Remote Security Analyst Salary

Yearly Monthly Weekly Hourly Table View



INVESTIGATIVE SERVICES



South Carolina House Oversight Committee,
Columbia, South Carolina

Thomas H. Robertson, Major/Investigative Services

MAJOR THOMAS H. ROBERTSON



51 years of service in law enforcement

- SC Highway Patrol, 1976 - 1986, with experience with Patrol and the Governor's Security Detail
- SLED, 1986 - present, with experience in the Midlands Regional Investigations, the Vehicle Crimes Unit, and Investigative Services
 - Has served as Lieutenant in the Midlands Region, Lieutenant in the Vehicle Crimes Unit, Captain of the Midlands Region, and Executive Officer in Investigative Services

Major over Investigative Services Division since 2020

MISSION



To conduct quality, independent, and timely criminal investigations on behalf of the State of South Carolina and to provide resources, manpower, and technical assistance to local, state, and federal law enforcement agencies.

PURPOSE



Investigative Services conducts professional investigations for the purpose of solving crimes and promoting public order within several specialized areas including immediate response with manpower or component services to assist our local, state and federal partners. Assigned on-call agents within every section ensure an appropriate and timely response to customer requests for services at any hour of any day. The departments and units that comprise Investigative Services are separated into functional areas in order to provide specialized services.

UNITS/DEPARTMENTS

INVESTIGATIVE SERVICES CONSISTS OF THE FOLLOWING:

- Regional Investigations
- Behavioral Science
- Polygraph
- Special Victims
- Forensic Art
- State Grand Jury/Insurance Fraud
- Training
- Vehicle Crimes/Social Security Fraud
- Financial Fraud Examiner
- Department of Employment and Work Force
- Law Enforcement Victim Advocates



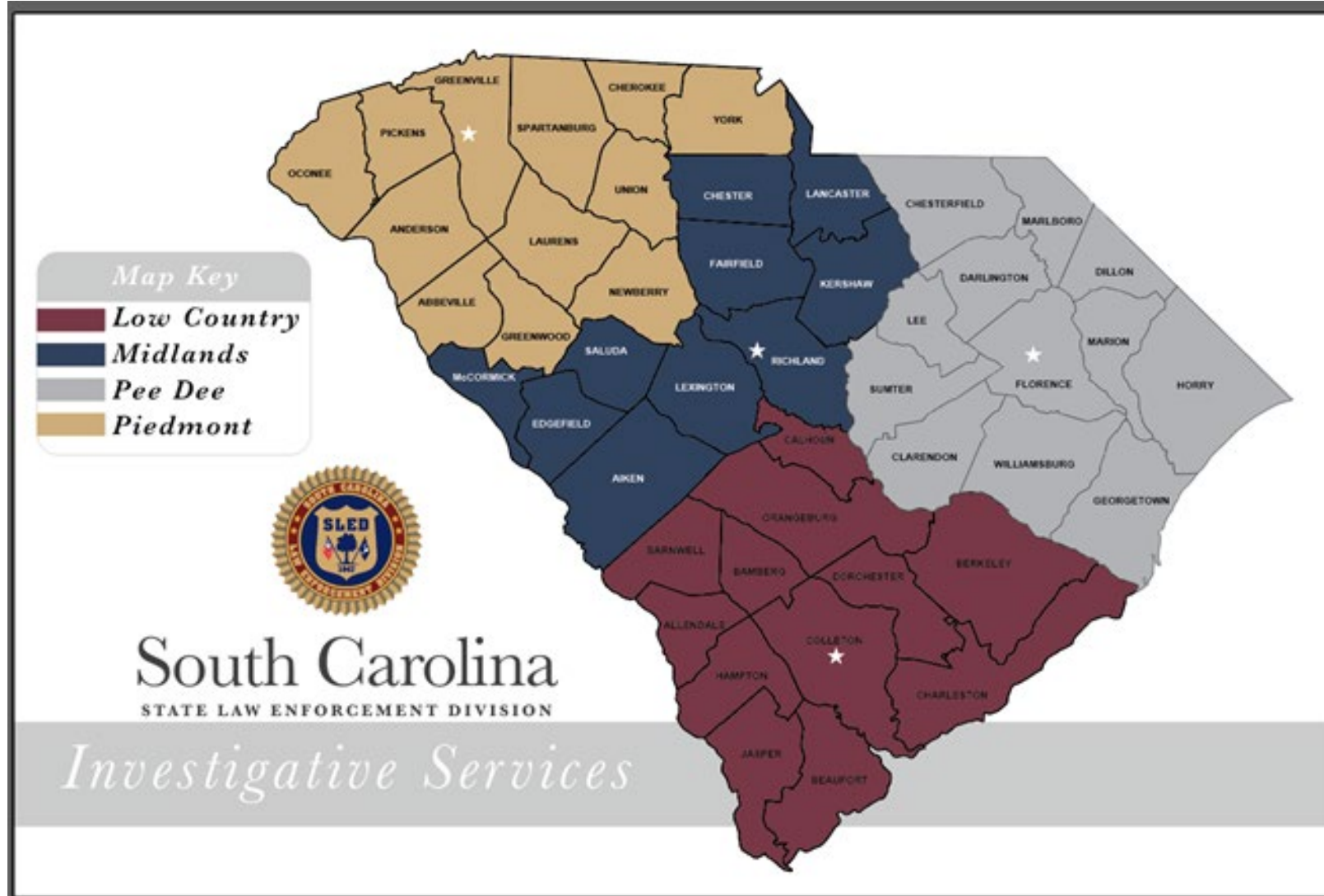
REGIONAL INVESTIGATIONS



SLED agents conduct field investigations of major crimes throughout the State of South Carolina, including officer involved shootings, in-custody death investigations, official misconduct, public corruption cases, criminal sexual conduct, and death investigations.

SLED operates four regional offices located in the Piedmont (Greenville), Midlands (Columbia), Pee Dee (Florence), and Low Country (Walterboro).

REGIONAL INVESTIGATIONS



BEHAVIORAL SCIENCE



Provides investigative analysis in order to identify a responsible party or unknown perpetrator based on crime analysis, forensic psychology, and behavioral science.

- Conducts threat assessments and analysis of individuals who convey threatening or inappropriate communication by determining the level of dangerousness of individuals and providing interventions to lower the risk of harm.
- Instruct on school threat assessments.

POLYGRAPH



- Conducts polygraphs to assist with criminal investigations for SLED and for other law enforcement agencies.
- Conducts polygraphs for SLED pre-employment screening and for internal investigations.
- Regulates polygraph licensure for government examiners and private examiners for the State of South Carolina.
- Conducts training upon request for law enforcement intern polygraph examiners

SPECIAL VICTIMS UNIT



- The Vulnerable Adults Unit receives and investigates reports of alleged abuse, neglect or exploitation of vulnerable adults in state facilities and coordinates the referral of other abuse cases in non-state facilities.
- The Child Fatalities Unit investigates deaths of children where the death is suspicious, unexpected or unexplained through notifications from county coroners or medical examiners as well as local law enforcement agencies.

FORENSIC ART



Provides composite sketches, postmortem images, and facial reconstruction on the skull for identification purposes, age progressions, and for use as court exhibits to support SLED.

STATE GRAND JURY/INSURANCE FRAUD



- Conducts investigations into public corruption, white collar crime, insurance fraud, and security fraud.
- Works with FBI on various assigned task forces including public corruption and insurance fraud

TRAINING UNIT



- Provides annual training, in-service training, and specialized training to all sworn agents.
- Conducts training for SLED's non-sworn staff.
- Identifies and evaluates emerging training trends to ensure curriculums and classes for sworn and non-sworn personnel are current.

VEHICLE CRIMES



- Investigates drivers' license fraud, identification fraud, and title violation cases referred from the South Carolina Department of Motor Vehicles.
- Provides assistance to law enforcement agencies on vehicle or vehicle part inspections at junkyards, scrap metal processing facilities, salvage yards, repair shops, public garages and car lots.
- Provides technical assistance to local law enforcement agencies the identification of chopped-burned-stolen vehicles, complex auto theft rings, identity fraud and vehicle fraud investigations.

SOCIAL SECURITY FRAUD



- Comprised of one team leader from the SSA Office of Inspector General (OIG) and two agents from SLED.
- Investigates fraudulent disability claims under SSA's Title II and Title XVI (SSI and SSDI) programs and usually begin with referrals from anonymous sources, private citizens, local law enforcement agencies, or from the SSA's Office of Disability Adjudication.
- Pursues investigations that are criminal in nature.

FINANCIAL FRAUD EXAMINER



Conducts the examination of complex financial investigations in cooperation with case agents, prosecuting attorneys, and others by providing knowledge of accounting and financial practices, securities, banking laws, conventional and non-conventional financial systems, and profit/non-profit businesses.

DEPARTMENT OF EMPLOYMENT & WORKFORCE



Coordinates with the Department of Employment and Workforce and conducts complex unemployment fraud investigations.

LAW ENFORCEMENT VICTIM ADVOCATES



- Provide crisis intervention, on-scene response, and emergency assistance with securing safe housing or coordinating crime scene cleanup and/or necessary household repairs.
- Provide victims with information about the criminal justice process and victim rights including how to obtain notifications, referrals to other victim service programs, and referral to other services, supports, and resources.
- Assist the victim in filing for crime victims' compensation and locating other funding options to help with financial needs.
- Provide victims with advocacy and/or accompaniment to emergency medical care, medical forensic exams, and law enforcement interviews.
- Provide individual advocacy; assistance in applying for public benefits, return of personal property, intervention with employer, creditor, landlord, and/or academic institutions, and provide transportation assistance.

STAFFING



Current Staff:

- Major 1
- Captains 10
- Lieutenants 21
- Sworn 143
- Non-Sworn 11

Open Positions:

- Sworn 11
- Non-Sworn 0

GOALS



IMPROVE THE OVERALL QUALITY OF SLED INVESTIGATIONS:

- Maintain sufficient quality manpower and resources to meet investigative needs throughout the State of South Carolina.
- Continue training efforts to improve the overall investigative product generated by SLED, including ongoing efforts to improve the overall quality, thoroughness, and timeliness of SLED investigations and SLED reports.
- Identify technology that can assist in improving investigations.
- Continue efforts to improve Officer Involved Shooting and In-Custody Death Investigations and to ensure consistency throughout the State.

CHALLENGES



- Division recruitment and retention
- Embracing technological advancements in law enforcement
- Protecting agents' safety and health
- Strengthening agency-community relations
- Training and development

RELATIONSHIPS



- Building strong relationships of mutual trust between SLED and police agencies is critical to effective policing.
- Promote communication and coordination within the Criminal Justice System including facilitating and improving cooperation and communication between SLED and South Carolina prosecutors and court personnel; local, state and federal law enforcement; and the community at large.

STATISTICS



Officer Involved Shootings

2019	45
2020	49
2021	40
2022	32
2023	43
2024	45
2025	20 (as of May 19th)

STATISTICS

In-Custody Deaths

2023 47

2024 49

2025 25 (As of May 19th)



STATISTICS



Region Year-to-Date Case Comparison

REGION YTD CASE COMPARISON	<u>2024 YTD</u>	<u>2023 YTD</u>
LOW COUNTRY	194	142
MIDLANDS	179	185
PEE DEE	144	173
PIEDMONT	175	160

QUESTIONS



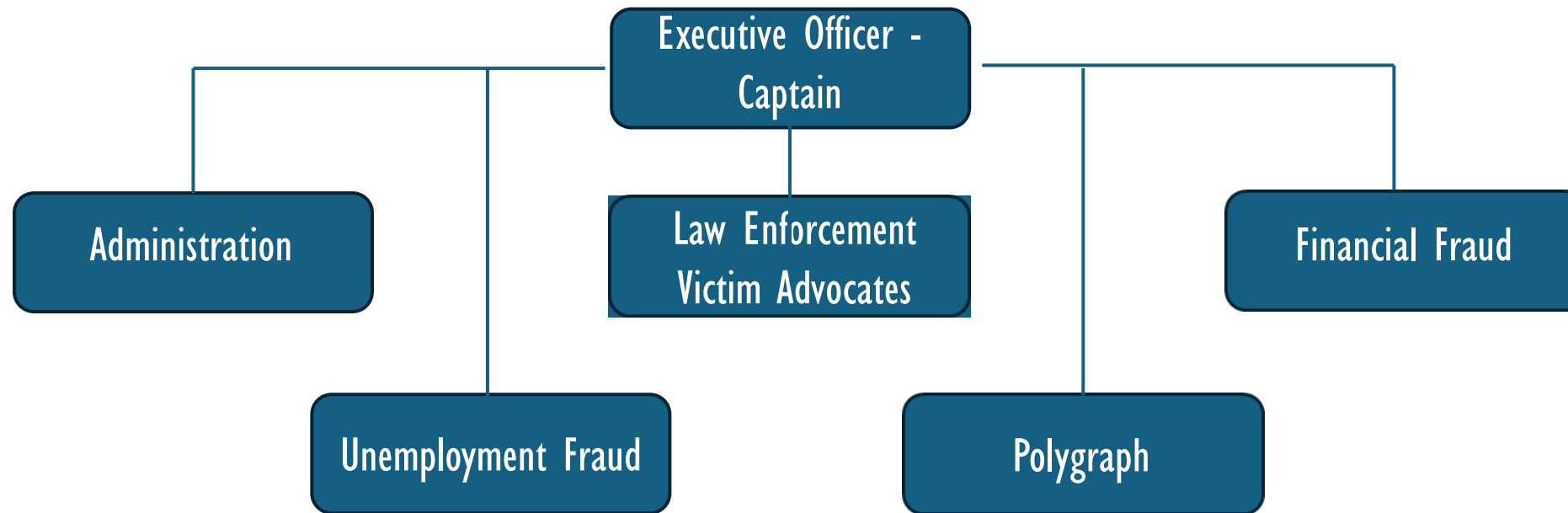
INVESTIGATIVE SERVICES ADMINISTRATION SECTION



Bryan Jones, Captain, Investigative Services
Administration Section



INVESTIGATIVE SERVICES - ADMINISTRATION SECTION





ADMINISTRATION



INVESTIGATIVE SERVICES — ADMINISTRATION SECTION

- Administration – Captain and an Administrative Coordinator (2/2)
- Polygraph – Lieutenant, an FTE Examiner, a Temp/FTE Examiner, and a Temp Administrative Assistant (4/4)
- Financial Fraud Examiners – Two Agents (1/2)
- Law Enforcement Victim Advocates – Supervising Advocate and an Advocate (2/2)
- Unemployment Fraud – One Agent (1/1)

Total Staffing: 10/11

ADMINISTRATION



RESPONSIBILITIES

The Administration Section is an important area of SLED's Investigative Services Division and is responsible for providing direction and leadership for the Investigative Services Division.

- Captain, and an Administrative Coordinator (2/2)
- Processing and responding to requests for investigation from government agencies as well as the public
- Overseeing Implementation of the Case Management System
- Managing the Election Fraud Hotline and email account
- Managing the SLED Tips email account
- Compiling Stats for the Investigative Services Division

ELECTION FRAUD STATISTICS



2024 STATS

- 302 complaints received (hotline voicemail and email)
- 27 investigations opened
 - Open/Active: 2
 - Under Prosecutorial Review: 1
 - Awaiting Court: 1
 - Closed
 - Unfounded: 12
 - Exceptionally Cleared: 4
 - Prosecution Declined: 6
 - Inactive/Completed: 1

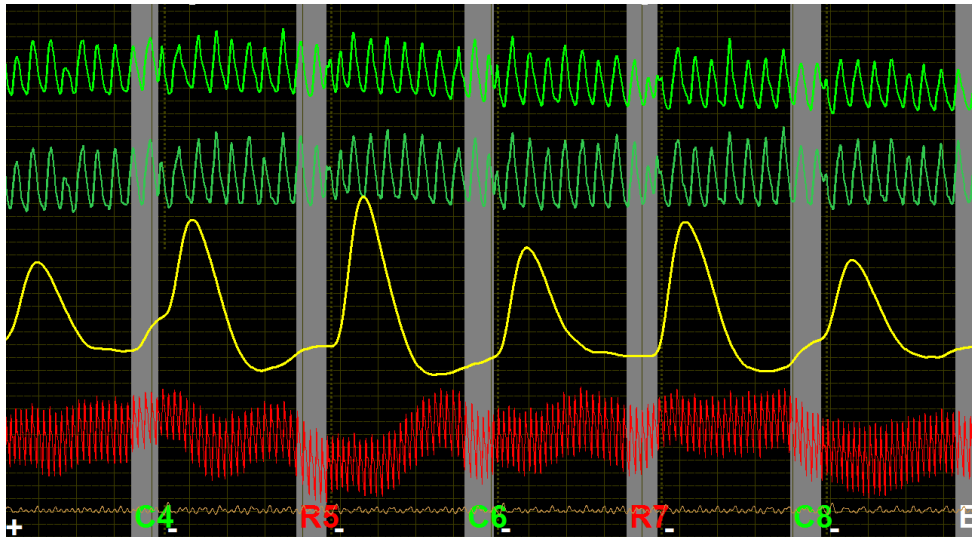


POLYGRAPH UNIT

POLYGRAPH UNIT



- Lieutenant, an FTE Examiner, a Temp/FTE Examiner, and a Temp Administrative Assistant (4/4)
- Conducts polygraphs
 - To assist with criminal investigations for federal, state, and local law enforcement agencies
 - To screen applicants seeking positions within SLED
- Regulates Licensure of 103 SC Polygraph Examiners including 3 intern examiners (SC Polygraph Examiners Act, Section 40, Chapter 53)



SOUTH CAROLINA LAW ENFORCEMENT DIVISION

SPECIALIZED TRAINING



Education and Licensure

- Completed polygraph training at an American Polygraph Association approved school
- Possess valid SC polygraph licenses
- Completed the SC Criminal Justice Academy Basic Law Enforcement Training
- Obtained specialized training in Interviews and Interrogations and polygraph related topics

SPECIALIZED EQUIPMENT



STATISTICS



	2019	%	2020	%	2021	%	2022	%	2023	%	2024	%
Requests	343		215		472		329		230		299	
Conducted	213	62%	139	65%	318	67%	232	71%	146	63%	205	69%
No Opinions	36	17%	21	15%	31	10%	27	12%	6	4%	16	8%
Confessions	20	25%	17	33%	24	26%	13	27%	13	50%	20	61%

POLYGRAPH GOALS



- No Opinion results less than 25%
 - Inconclusive data is not very helpful
- Confession rate above 50%
 - Confessions can resolve investigations quickly and save agencies the expense of lengthy investigations and prosecutions
- Continue to mentor law enforcement Intern Polygraph Examiners
 - Intern Examiners can learn from multiple examiners during their internship.
 - Help standardize polygraph approach for criminal investigations
 - Build relationships with other examiners

POLYGRAPH OVERTIME FY24

- 87.95 hours for \$3,678.02



UNEMPLOYMENT FRAUD



Responsibilities

Coordinates with the Department of Employment and Workforce (SC DEW) and conducts complex unemployment fraud investigations

- One Senior Special Agent (1/1)
- Works directly with SC DEW attorneys and analysts to identify and prosecute unemployment fraud
- Provides SC DEW with direct access to SLED's resources

STATISTICS



	2023 (Oct – Dec)	2024
Active Cases	9	6
Closed Cases	0	5
Arrests	N/A	4

UNEMPLOYMENT FRAUD OVERTIME FY24



10.00 hours for \$566.90

GOALS



- Educate local law enforcement about how SLED and SC DEW can assist them with locating fugitives, witnesses, and victims.
- Ensure any unemployment cases received by other SLED units forwarded to SS/A Stoner and SCDEW for investigation.



FINANCIAL FRAUD UNIT

FINANCIAL FRAUD UNIT



- **RESPONSIBILITIES**

- A Senior Special Agent and a Special Agent (1/2)
- Conducts the examination of complex financial investigations
- Cooperates with case agents, prosecuting attorneys, and others
- Provides knowledge of accounting and financial practices, securities, and banking laws
- Provides knowledge of conventional and non-conventional financial systems and profit/non-profit businesses

- **TYPES OF CASES**

Bank Fraud	Breach of Trust	Cyber Fraud
Elder Exploitation	Embezzlement	Forgery
Homicide	Human Trafficking	Larceny
Misconduct	Narcotics	Securities Fraud
Unemployment Fraud	Vice – Gambling	

FINANCIAL FRAUD UNIT OVERTIME FY24

- 112.00 hours for \$5,229.55



STATISTICS



	2022	2023	2024
Total Cases	11	32	37

- Financial Fraud Unit started in July 2022

2023 and 2024

- Breach of Trust cases, Misconduct, and Embezzlement cases

LAW ENFORCEMENT VICTIM ADVOCATES



LAW ENFORCEMENT VICTIM ADVOCATES



RESPONSIBILITIES

Provides support and advocacy for victims with the goal of reducing traumatization, reducing reoccurrences of revictimization, maximize case results for prosecution, while honoring and protecting state and federal rights of crime victims.

- A Program Coordinator II and a Program Coordinator I (2/2)
- Victim-centered interventions and service delivery are key to the safety, stability, and healing of crime victims, as their use ultimately reduces and prevents future victimization.
- Provide crisis intervention, on-scene response, and emergency assistance with securing safe housing or coordinating crime scene cleanup and/or necessary household repairs.

LAW ENFORCEMENT VICTIM ADVOCATES



- Provide victims with information about the criminal justice process and victim rights including how to obtain notifications, referrals to other victim service programs, and referrals to other services, supports, and resources.
- Assist the victim in filing for crime victims' compensation and locating other funding options to help with financial needs.
- Provide victims with advocacy and/or accompaniment to emergency medical care, medical forensic exams, and law enforcement interviews. Provide individual advocacy; assistance in applying for public benefits, return of personal property, intervention with employer, creditor, landlord, and/or academic institutions, and provide transportation assistance.

STATISTICS



	2020	2021	2022	2023	2024
Cases	145	120	174	192	187
Victims Served	292	272	385	357	413

LEVA OVERTIME FY24



- 127.50 hours for \$4,964.56

SPECIALIZED TRAINING



- SC Victim Service Provider Certification – General Crime
- Victim Service Provider – Human Trafficking Certification
- Requires annual continuing education hours to renew certifications

GOALS



- Increase awareness and education of victim's rights within state and local agencies that work with victims of crime.
- We would like to have two more LEVAs to have representation in each of the four regions we serve (Piedmont, Midlands, Lowcountry and Pee Dee).

CONCLUSION & QUESTIONS



**Investigative Services – Administration Section
House Oversight Committee**



INVESTIGATIVE SERVICES

REGIONAL INVESTIGATIONS

**South Carolina Government Efficiency and Legislative
Oversight Committee**

Columbia, South Carolina

Regional Investigations



Conduct professional investigations in a thorough and timely manner. SLED agents can either supplement another agency's investigators or assume the primary investigative role depending on the request and/or need.

Regional agents stand ready to respond immediately to investigative requests from sheriffs; chiefs of police; circuit solicitors; coroners; the SC Attorney General's Office; and other local, state, or federal law enforcement partners.

Partner Relationships



Strong relationships with our local, state, and federal law enforcement partners are the backbone to SLED's success.

Regional Captains, Lieutenants, and Agents have developed and continue to foster strong relationships with the sheriffs, chiefs of police, coroners, circuit solicitors, other state agencies, and federal agencies operating within each region.

"Let us continue our successful partnership, one that has been based on communication, collaboration, and cooperation, and let us set our State on a course that will provide the opportunity for prosperity, success, and happiness for generations of South Carolinians." - Governor McMaster

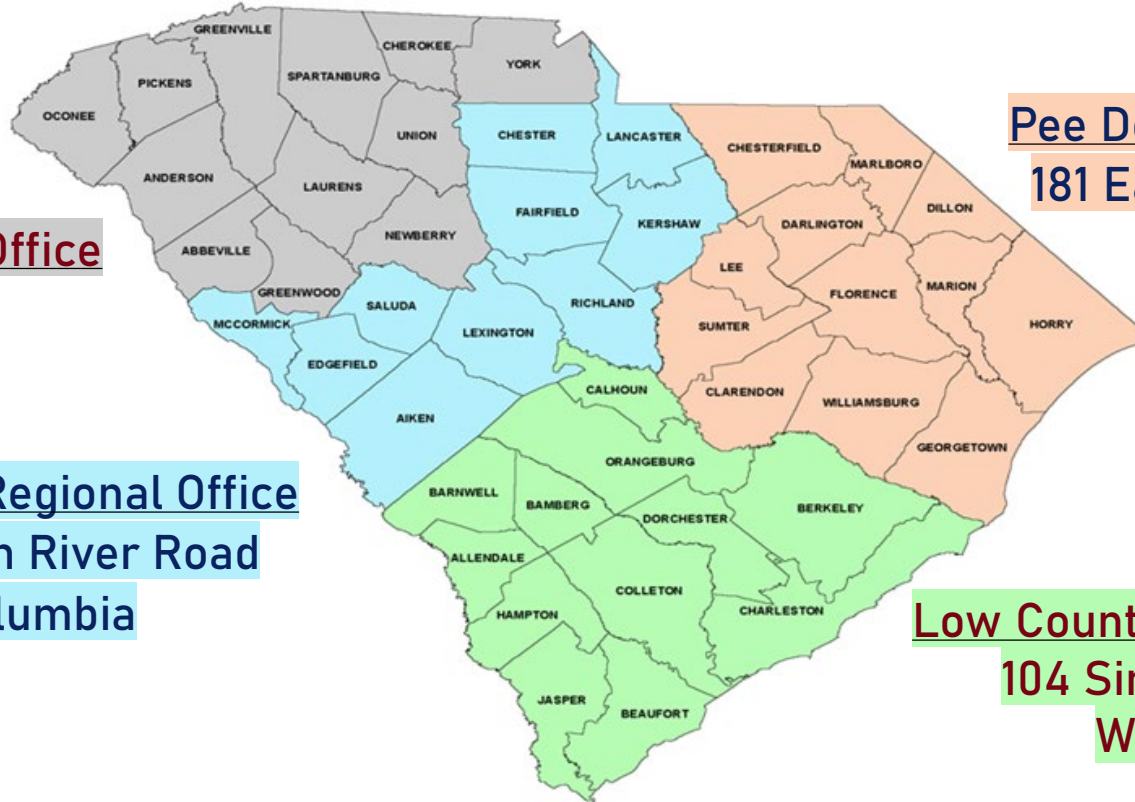
Regional Agents



Regional Agents are expected to be proficient in interview and interrogation skills, death/homicide investigations, violent crime investigations, criminal sexual conduct investigations, officer-involved shooting investigations, financial crime investigations, election violations, official misconduct investigations, public corruption investigations, weapon violations, and many other investigations as requested by our law enforcement partners.

Regional agents must possess the capability to work almost any type of investigation, many of which are highly complex and/or sensitive in nature.

Regional Investigations



Piedmont Regional Office
37 Villa Road
Greenville

Midlands Regional Office
1731 Bush River Road
Columbia

Pee Dee Regional Office
181 East Evans Street
Florence

Low Country Regional Office
104 Simmons Street
Walterboro

"Everybody in this state deserves an equal level of law enforcement service and that's what SLED is about. No matter where you live, no matter where you're from, if crime happens in your community, we are going to be there to see that justice is served." - Chief Mark Keel

Lowcountry Region



Captain Shaun Harley



Administrative Lieutenant
Matt Brown

Administrative Coordinator
Debby Tebeau

Lieutenant
Charles Ghent

8 – Special Agents

Lieutenant
Mitch Altman

7 – Special Agents



Current Office
104 Simmons Street, Walterboro

Midlands Region



Captain Derrick Horton



Administrative Lieutenant
Kristen Grant

Administrative Coordinator
Christen Morrow

Lieutenant
DeQuawn Smith

8 – Special Agents

Lieutenant
Lee Blackmon

7 – Special Agents



Current Office
1731 Bush River Road, Columbia

Future Office (UNDER CONSTRUCTION)
Old SLED Lab, Columbia

Pee Dee Region



Captain Glenn Wood



Administrative Lieutenant
Stephen Howell

Administrative Coordinator
Erica Kennedy

Lieutenant
Jared Barkdoll

8 – Special Agents

Lieutenant
Jacqueline “Jackey” Gause

7 – Special Agents



Current Office
181 East Evans Street, Florence



Future Office (UNDER CONSTRUCTION)
Francis Marion Road, Florence

Piedmont Region



Captain Jeff Kindley



Administrative Lieutenant
Melissa Wallace

Administrative Coordinator
Erin Blitzer

Lieutenant
Todd Ruffner

7 – Special Agents

Lieutenant
Daren Vaughn

8 – Special Agents



Current Office
37 Villa Road, Greenville

Low Country Region

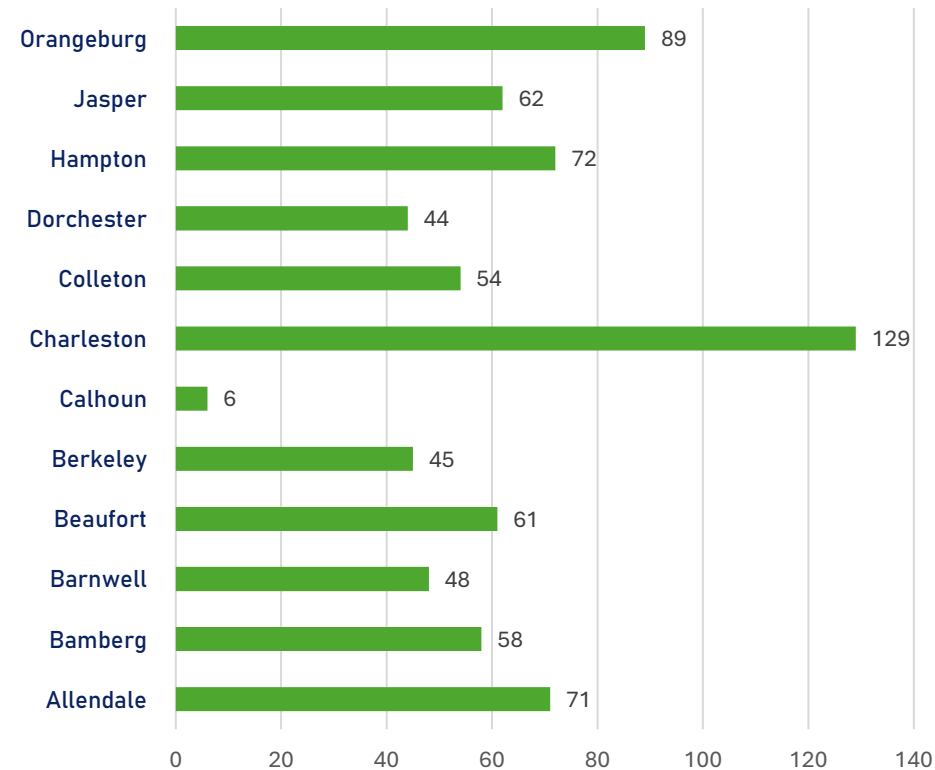


Investigations Initiated

County	2020	2021	2022	2023	2024
Allendale	15	17	17	10	12
Bamberg	7	10	9	19	13
Barnwell	9	9	8	12	10
Beaufort	16	8	13	11	13
Berkeley	11	5	9	8	12
Calhoun	1	0	2	1	2
Charleston	19	24	30	19	37
Colleton	11	11	12	10	10
Dorchester	12	6	3	12	11
Hampton	10	14	17	15	16
Jasper	13	9	14	13	13
Orangeburg	23	20	19	12	15
Total Cases	147	133	153	142	164

Note: 2024 statistics are January through October

5-year total cases by County



Midlands Region

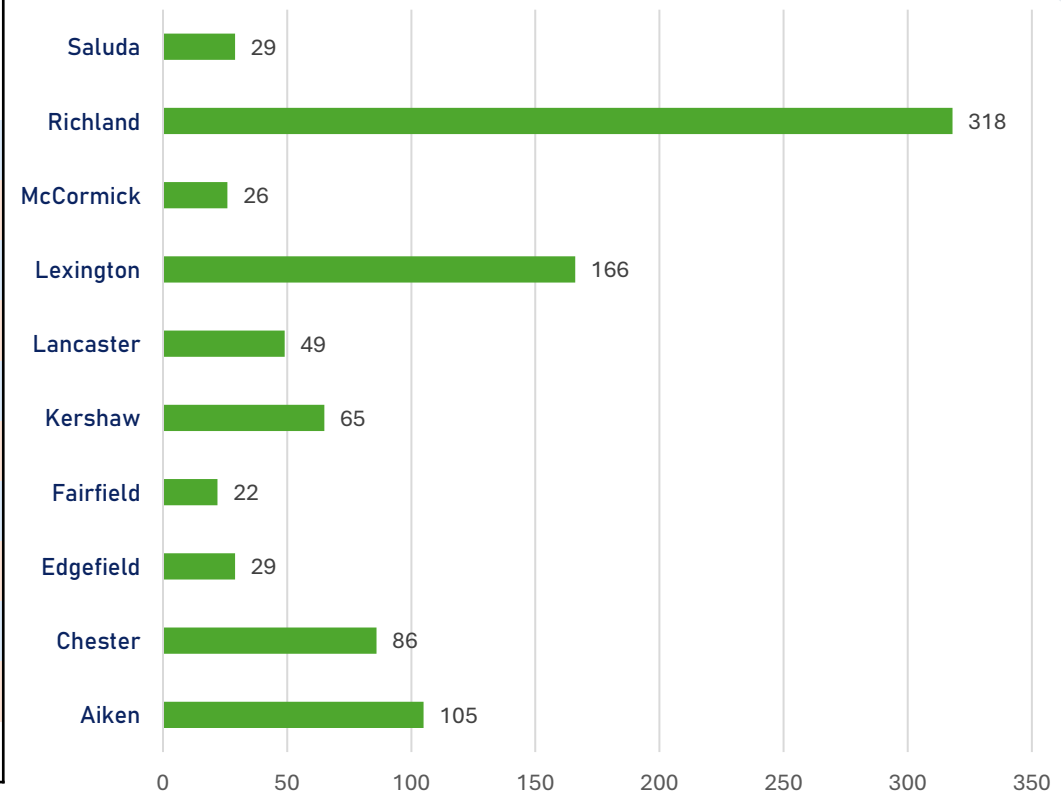


Investigations Initiated

	2020	2021	2022	2023	2024
Aiken	15	17	25	23	25
Chester	10	14	18	23	21
Edgefield	4	7	5	3	10
Fairfield	5	4	4	5	4
Kershaw	13	18	12	12	10
Lancaster	10	12	9	11	7
Lexington	44	33	34	26	29
McCormick	6	4	4	5	7
Richland	43	91	74	71	39
Saluda	5	6	7	6	5
Total Cases	155	206	192	185	157

Note: 2024 statistics are January through October

5-year total cases by County



Pee Dee Region

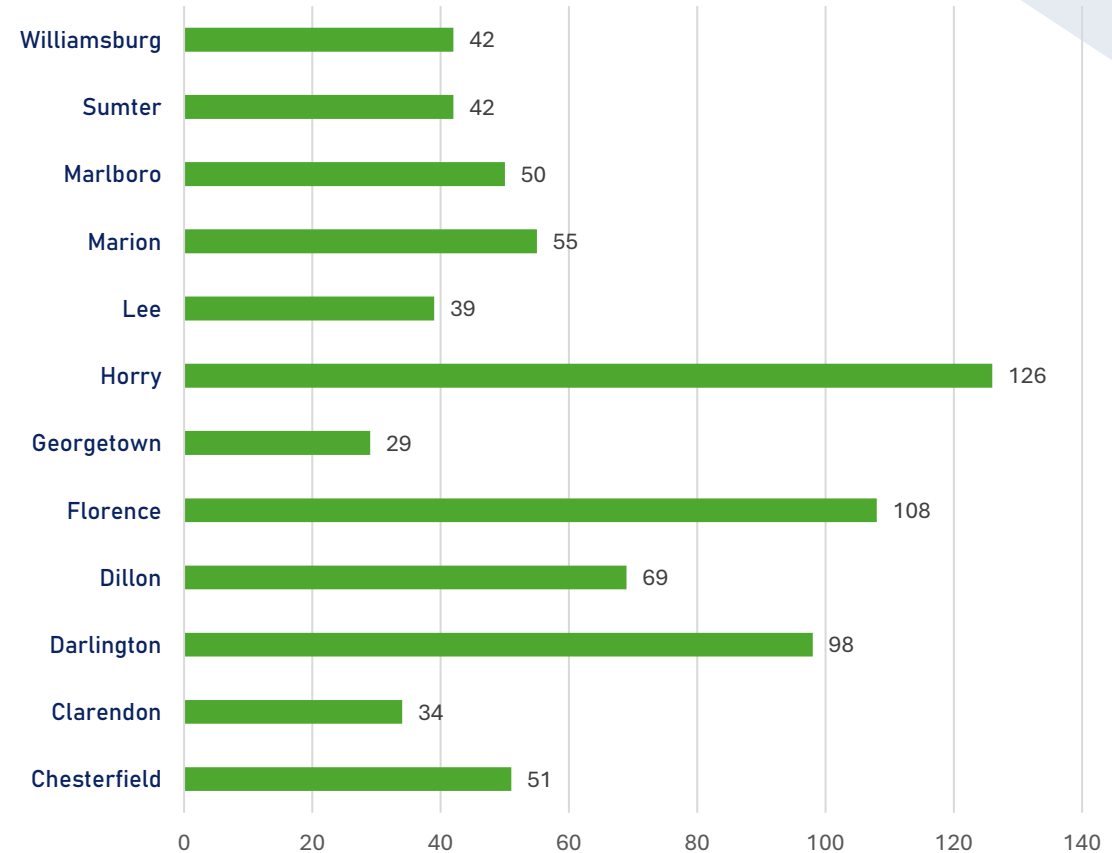


Investigations Initiated

County Served	2020	2021	2022	2023	2024
Chesterfield	11	10	7	11	12
Clarendon	7	6	9	6	6
Darlington	14	24	20	21	19
Dillon	12	16	14	21	6
Florence	25	31	20	18	14
Georgetown	4	7	9	4	5
Horry	25	27	28	24	22
Lee	8	8	7	11	5
Marion	12	18	9	11	5
Marlboro	14	10	8	10	8
Sumter	12	5	12	8	5
Williamsburg	6	4	14	13	5
Total Cases	150	166	157	158	112

Note: 2024 statistics are January through October

5-year total cases by County



Piedmont Region

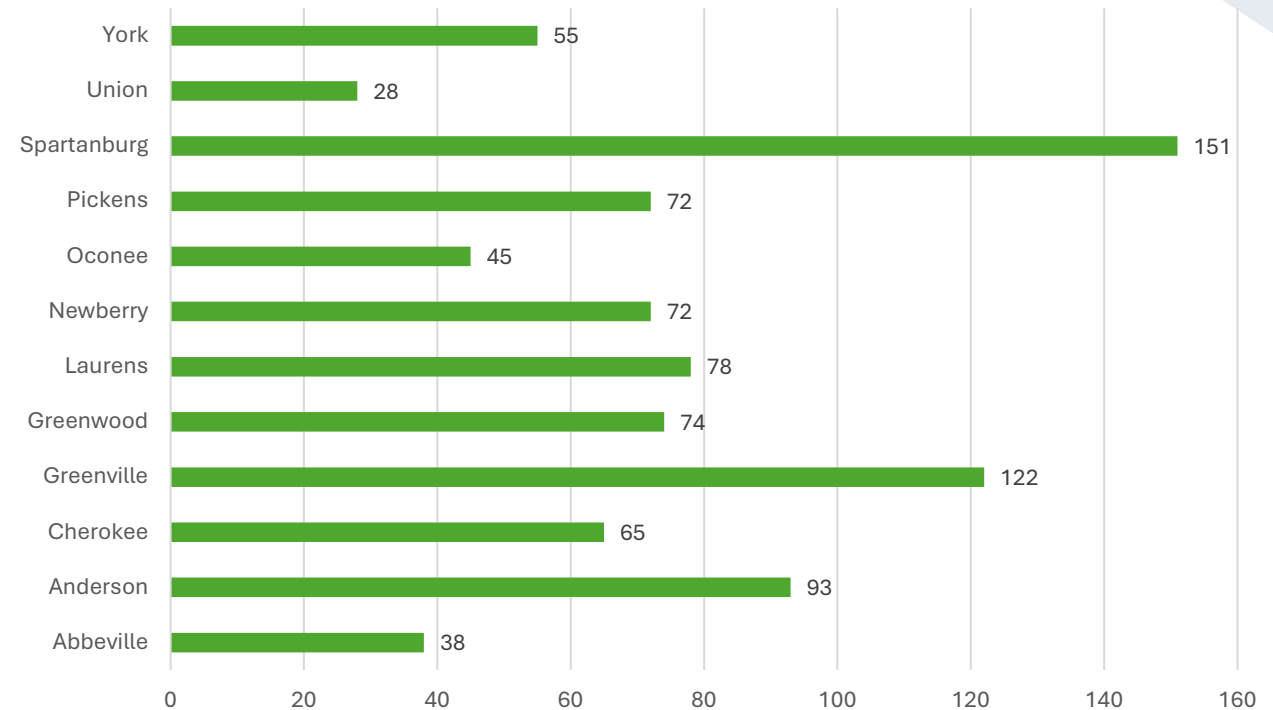


Investigations Initiated

	2020	2021	2022	2023	2024
Abbeville	7	10	8	9	4
Anderson	23	20	17	20	13
Cherokee	17	23	10	6	9
Greenville	11	39	31	21	20
Greenwood	43	9	10	6	6
Laurens	20	10	17	15	16
Newberry	20	19	13	6	14
Oconee	5	19	5	6	10
Pickens	30	9	14	9	10
Spartanburg	30	35	41	38	37
Union	7	5	8	4	4
York	22	1	13	13	6
Total Cases	214	217	191	160	154

Note: 2024 statistics are January through October

5-year total cases by County



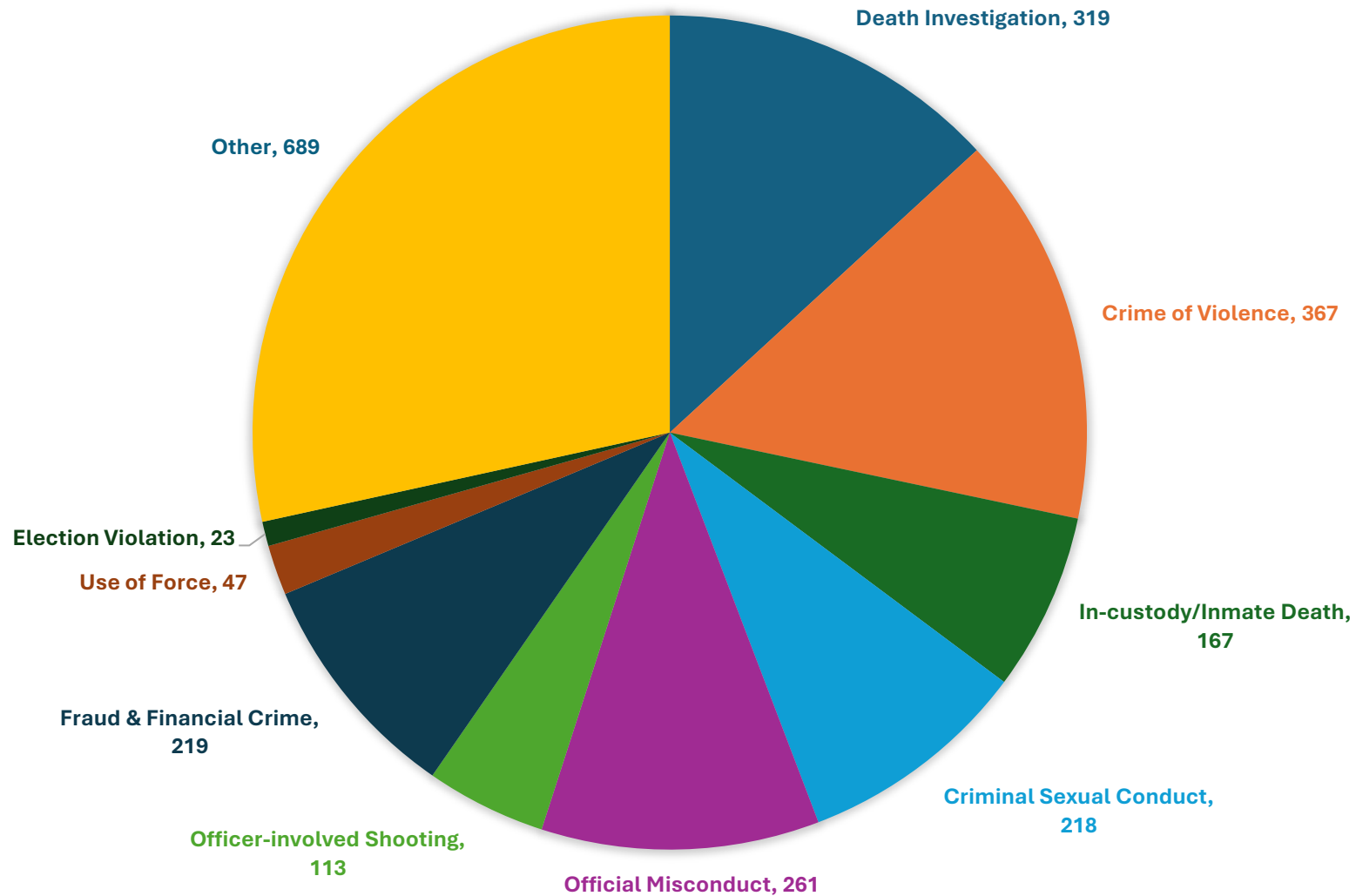
Regional Investigations



Investigation Type	<u>Low Country</u>					<u>Midlands</u>					<u>Pee Dee</u>					<u>Piedmont</u>					<u>All Regions</u>
	2020	2021	2022	2023	2024	2020	2021	2022	2023	2024	2020	2021	2022	2023	2024	2020	2021	2022	2023	2024	5-year Total
Death Investigation	29	17	26	26	17	21	22	23	13	18	15	30	17	24	21	18	12	11	12	7	319
Crime of Violence	26	27	47	38	45	23	29	20	27	17	18	8	17	15	10	32	36	16	18	20	367
In-custody/Inmate Death	6	8	7	9	12	11	12	5	11	8	9	8	12	16	15	18	18	21	20	17	149
Criminal Sexual Conduct	21	18	21	18	9	10	20	25	15	11	14	4	10	15	7	30	20	25	18	15	218
Official Misconduct	13	15	9	9	11	15	10	16	21	13	15	39	24	28	23	18	31	17	15	11	261
Officer-involved Shooting	13	5	4	8	10	9	10	6	11	2	10	5	11	4	5	13	18	9	16	16	113
Fraud & Financial Crime	11	15	10	15	16	12	19	17	23	21	17	9	11	17	6	28	17	17	20	8	219
Use of Force	4	5	3	3	7	2	1	4	3	1	0	0	7	5	2	0	4	10	5	7	47
Election Violation	1	0	0	1	8	1	0	0	0	0	3	2	3	1	3	0	2	2	0	7	23
Other	23	23	26	15	29	51	83	76	61	66	49	61	45	48	33	57	59	63	36	46	689
Total Cases	147	133	153	142	164	155	206	192	185	157	150	166	157	173	125	214	217	191	160	154	3,341

Note: 2024 statistics are January through October

5-year Regional Investigations





INVESTIGATIVE SERVICES

REGIONAL INVESTIGATIONS

HIGHLIGHTS

James Baldwin



- In December 2016, the Chester County Sheriff's Office (CCSO) and South Carolina Highway Patrol (SCHP) responded to a vehicle collision involving James and Judy Orr Baldwin. James claimed he was taking Judy to the hospital after she fell off a ladder in their home while decorating the Christmas tree and hit her head. James said another vehicle ran him off the road and down a steep embankment which caused Judy to be ejected from the vehicle. She was found by first responders deceased near the crash. The Chester County Coroner immediately had concerns about the way Judy had died. The Coroner did not believe Judy's injuries were consistent with having been ejected from a vehicle and the vehicle accident itself was not severe enough to have caused an ejection. The CCSO believed Judy's death was the result of the vehicle accident, turned their investigation over to the SCHP and closed their case. The Coroner believed Judy was murdered and requested SLED to investigate.
- SLED coordinated a meeting with the CCSO, SCHP, Sixth Circuit Solicitor's Office, and the Chester County Coroner to review the investigation. It was determined there were discrepancies in James' account of what occurred, and that SLED would assist the CCSO further investigate Judy's death.
- After a comprehensive review of the initial information followed by a more thorough investigation, it was determined James murdered Judy in their home and then tried to cover up his actions by staging a vehicle accident. Judy died as the result of blunt force trauma to the head. James was charged with Judy's murder and on November 15, 2019, he was found guilty and received a life sentence.
- Judy Baldwin's story was featured on Dateline NBC in 2020 which highlighted the SLED investigation.



Samantha Josephson



- On March 29, 2019, University of South Carolina senior Samantha Josephson was enjoying time with friends in the Five Points area of Columbia. As is common, Samantha requested an Uber to get back to her home. As she waited for her Uber outside a Five Points Bar, a black car pulled up next to her and she got into it. Samantha never made it home.
- The following morning, at about the same time Samantha's friends and family were reporting her missing to the Columbia Police Department (CPD), two turkey hunters discovered what turned out to be Samantha's body in a rural area of Clarendon County. It appeared Samantha had been stabbed multiple times. SLED Crime Scene and Pee Dee regional agents responded to the gruesome discovery in Clarendon County to assist.
- Later that night, CPD officers stopped a car matching the description of the one that picked Samantha up in Five Points the previous day. The driver, who was later identified as Nathaniel Rowland, ran from officers on the traffic stop but was apprehended. A search of his car revealed it contained a large amount of blood throughout the interior. The CPD requested assistance from SLED Crime Scene and Midlands regional agents.
- After an intensive and exhaustive investigation, which included expedited forensic analysis, witness interviews, reviews of surveillance footage, and cellular phone analysis, abundant evidence was collected and Nathaniel Rowland was charged by SLED with kidnapping and murdering Samantha.
- In 2021 Rowland was found guilty of kidnapping and murder and received a life sentence. The court made note of the "avalanche" of "overwhelming" direct and circumstantial evidence presented to the jury.
- Samantha Josephson's story has been featured in several television shows to include a 2023 episode of "Death in the Dorns" which highlighted the SLED investigation.
- Samantha's death also brought needed attention to services that provide for-hire vehicles. "Sami's Law" was enacted by the federal government in 2023 and requires improved safety protocols for services such as Uber and Lyft in addition to tracking assault incidents that occur with those services.



Madeleine & Oscar Del Rio



- On February 4, 2023, Cheraw Police Department responded to the Del Rio's residence after their neighbors found them deceased. SLED Crime Scene processed the crime scene. Cheraw PD initially believed Oscar Del Rio murdered his wife, Madeleine, and then killed himself — as the scene portrayed. After the autopsy, Chesterfield County Coroner Kip Kiser believed the deaths could be suspicious and requested further investigation. Chief Julius Riley requested SLED assist with the investigation on February 16, 2024.
- SLED S/A Cutchin reviewed the information Cheraw PD had gathered and began investigating further. S/A Cutchin and Cheraw PD investigators obtained historical telephone, financial, email, and probate records; witness statements; SLED Laboratory Analysis reports; additional physical evidence; and surveillance information. The investigation determined the neighbors, Nathaniel Meagher and Sarah Thompson, were involved with the Del Rios homicide. The motive was determined to be greed.
- On October 25, 2024, Cheraw PD and SLED arrested Meagher and Thompson for the murders of Madeleine and Oscar Del Rio. After Meager was arrested, he confessed to S/A Cutchin. Meagher admitted to killing the Del Rios and attempted to make the incident appear as a murder-suicide. Meagher is currently awaiting a trial, and the 4th Circuit Solicitor's Office is seeking the death penalty.



SLED Pee Dee Region case # 33-23-0020

Neil Brown



- On September 12, 2014, Horry County Police Department responded to an active shooter situation on South Reindeer Road. Neil Brown, armed with two handguns, barged into his former residence and threatened to kill his former girlfriend and her new companion. The two victims fled to the neighbor's house as Brown pursued and discharged his firearm at them. Brown then discharged his firearm into the neighbor's door. Two victims sustained gunshot wounds. Brown returned to his former home and continued to discharge his firearms. Two projectiles travelled into the other adjoining neighbor's home, which was occupied by a two-year-old and her parents. HCPD arrived, attempted to evacuate the neighborhood, and aided the two gunshot victims. After being challenged by HCPD officers, Brown discharged his firearm in their direction and two HCPD officers returned fire.
- HCPD requested SLED initially respond for the officer-involved shooting (OIS); however, SLED investigated the entire incident from the moment Brown entered his former residence until his peaceful surrender. As a result of the investigation, Brown was charged with Burglary, Domestic Violence of a High and Aggravated Nature, four counts of Assault and Battery of a High and Aggravated Nature, two counts of Discharging a Firearm into a Dwelling, four counts of Pointing and Presenting a Firearm, Aggravated Breach of Peace, and two counts of Possession of a Weapon During a Violent Crime.
- Brown died on October 11, 2024, after he jumped from the second floor of the J. Reuben Long Detention Center.

SLED Pee Dee Region case #s 2024-01717 & 2024-02266

CONCLUSION & QUESTIONS



State Law Enforcement Division



Behavioral Science Unit

Behavioral Science Unit (BSU)

23-3-15 SC Code of Laws

SLED Policies 9.18 & 13.39

- BSU provides consultation, investigative assistance and threat assessment and management for crimes of interpersonal and targeted violence for local, state or federal agencies.
 - Homicide.
 - Equivocal Deaths.
 - Sexual Assault.
 - Missing Persons.
 - Child Abuse.
 - Stalking and Harassment.
 - Threat Assessment and Management.
 - Executive, Legislative, Judicial Branches, State Agencies, K-12 schools and IHE's, local, state & federal agencies.

Unit Members

- *Captain Michael Prodan*, BS Criminal Justice, MS Criminal Justice Administration.
- *Lieutenant Haley Nelson*, BS, Forensic & Investigative Sciences, BA Criminology.
- *Senior Special Agent Kimberly Clamp*, BS Justice Studies, MS Psychology.
- *Special Agent Dalila Cirencione*, BA Experimental Psychology, MS Forensic Psychology.
- *Special Agent Kyle Radford*, BS Criminal Justice.
- *Special Agent Alison Fitzgerald*, BS Criminal Justice.

Unit Members

- Capt. Prodan, Lt. Nelson and SSA Clamp are Certified Criminal Profilers and Threat Assessors. SA's Cirencione, Radford and Fitzgerald are Profiler Understudies.
- All BSU members are members of the International Criminal Investigative Profilers Fellowship (ICIAF). Capt. Prodan was a founding member and currently President, Lt. Nelson is the Secretary.
- Law enforcement experience is extensive; Capt. Prodan, 52 years, Lt. Nelson, 12, SSA Clamp 18, SA Cirencione, 6, SA Radford 17 and SA Fitzgerald 11.

Training & Education



- All members have completed, or in the process of completing, certification as Criminal Profilers by the ICIAF.
 - Capt. Prodan is one of the 34 original Police Fellows of the FBI's National Center for the Analysis of Violent Crime in Criminal Investigative Profiling and Crime Scene Analysis.
- All members receive extensive training in Threat Assessment & Management from the USSS, the Association of Threat Assessment Professionals, DHS, USMS, US Capitol Police, FBI and others.
- Capt. Prodan and Lt. Nelson are certified Master Instructors in Behavioral Threat Assessment & Management by the US Dept. of Homeland Security.

Training & Education

Little or no special equipment is needed for BSU agents other than the standard agent complement. Specialized and advanced training depends on the agents' previous experience and education, courses may include;

- Homicide Investigation, Sexually Motivated & Cold Case Homicides
- Forensic Pathology
- Equivocal Death Analysis
- Sexual Assault Offenses and Sex Offender Typologies
- Child Molestation, Abduction, and Child Sex Offender Typologies
- Crime Scene Reconstruction and Crime Scene Analysis
- Interviews and Interrogations
- Abnormal Psychology
- Threat Assessment & Management of Targeted Violence
- Arson and Bombing Offender Typologies
- Instructor Development
- Media Relations
- Bloodstain Pattern Analysis
- Computer Aided Case Linkage Systems
- Forensic Laboratory Procedures and Capabilities
- Statement Analysis
- Forensic Linguistics

Approximately \$30k per year per understudy agent for training, including travel
An additional \$30k per year for continued education/training for current members.

Training & Education

In addition to training assigned SLED agents, BSU has provided training via internships to the following law enforcement agencies.

Royal Canadian Mounted Police, 2003, 2006, 2008, 2024.

Texas Rangers, 1997, 2003, 2022.

Georgia Bureau of Investigation, 1998, 2000, 2024.

Western Australia Police Service, 1999.

Victoria Australia Police Force, 2000.

Ontario Canada Provincial Police, 2002, 2018.

Florida Department of Law Enforcement, 2003.

Virginia State Police, 2004, 2010, 2020.

Netherlands Police Agency, 2007.

Quebec Canada Provincial Police, 2014, 2015, 2023.

Calgary Canada Police Service, 2023.

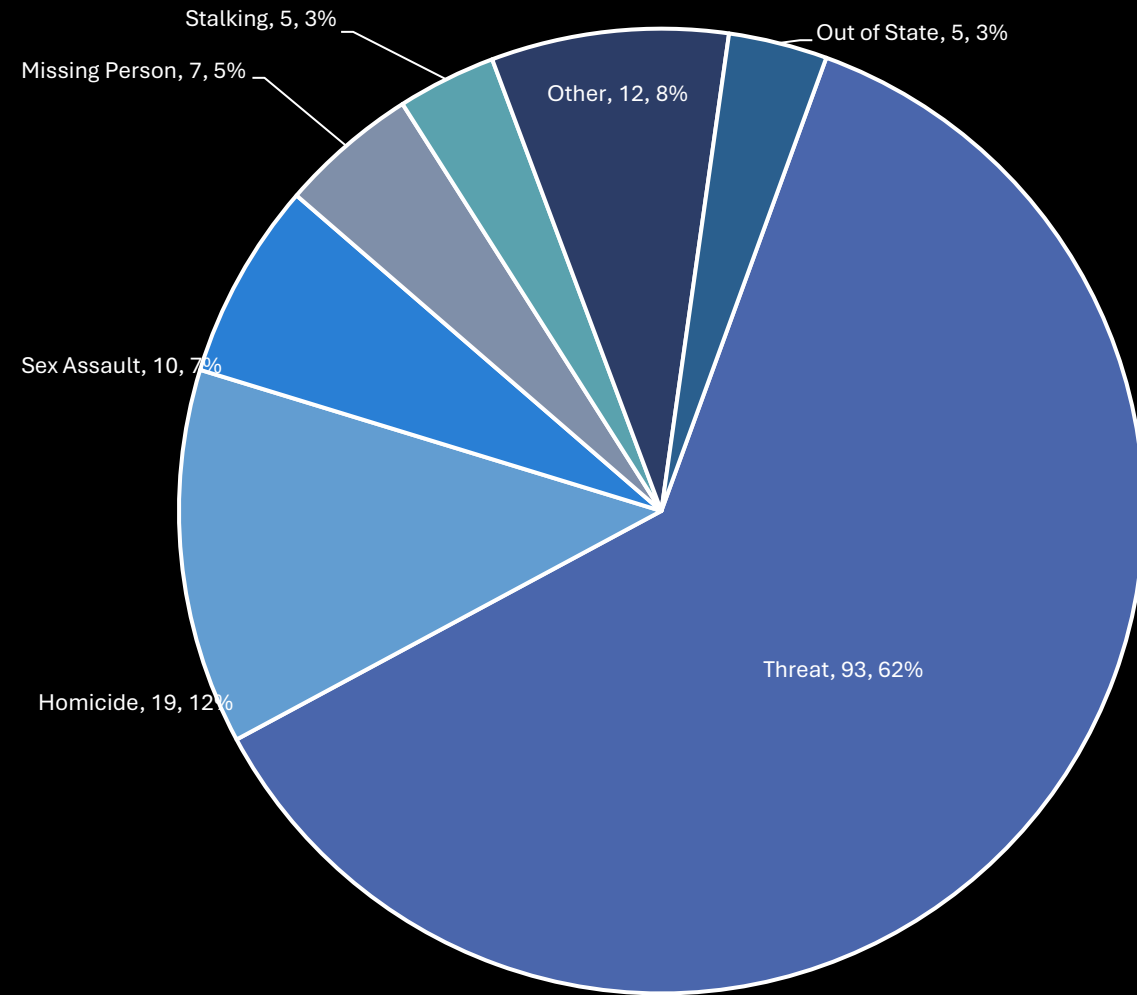
Pennsylvania State Police, 2023.

Requests for Analyses – Assessments 2020 - 2024

2020

176 requests, down
from 192 in 2019.

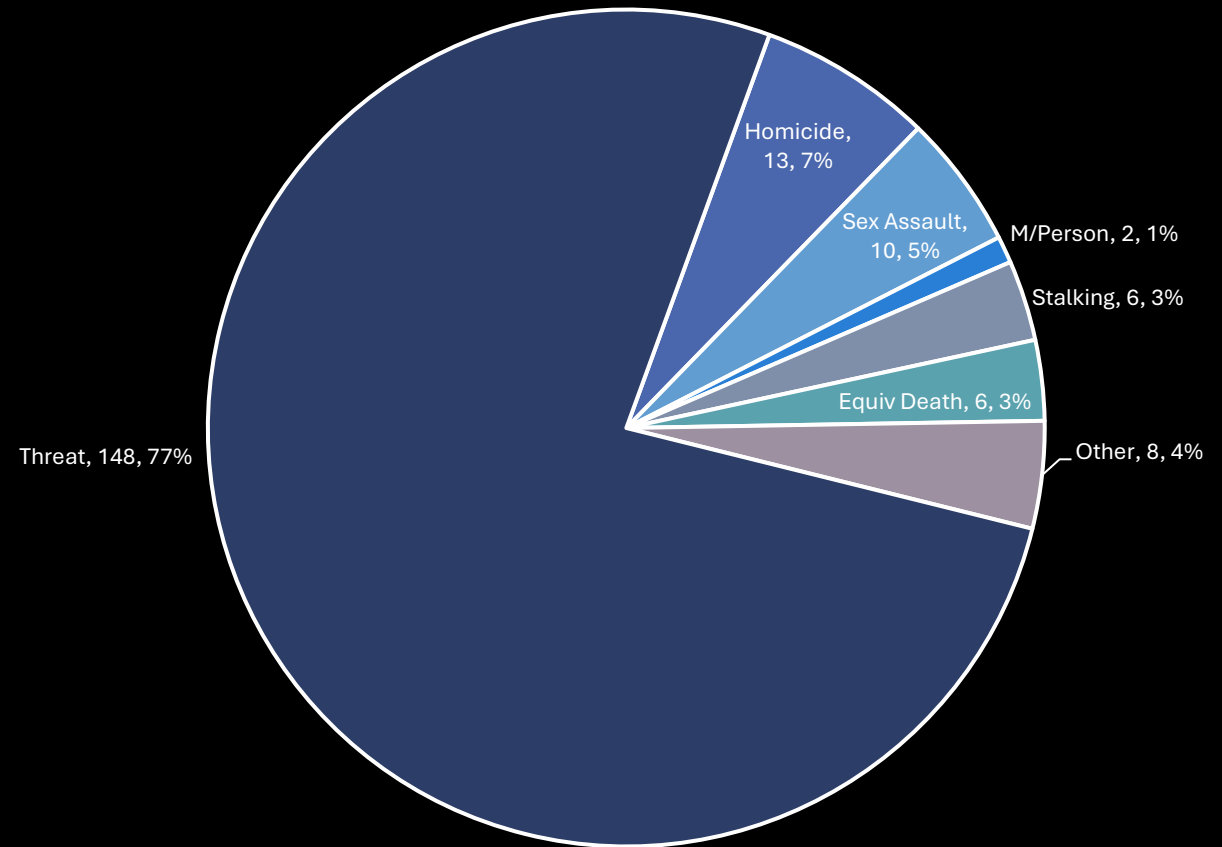
Only 4 members of BSU
in 2020.



2021

195 requests, up from
176 in 2020.

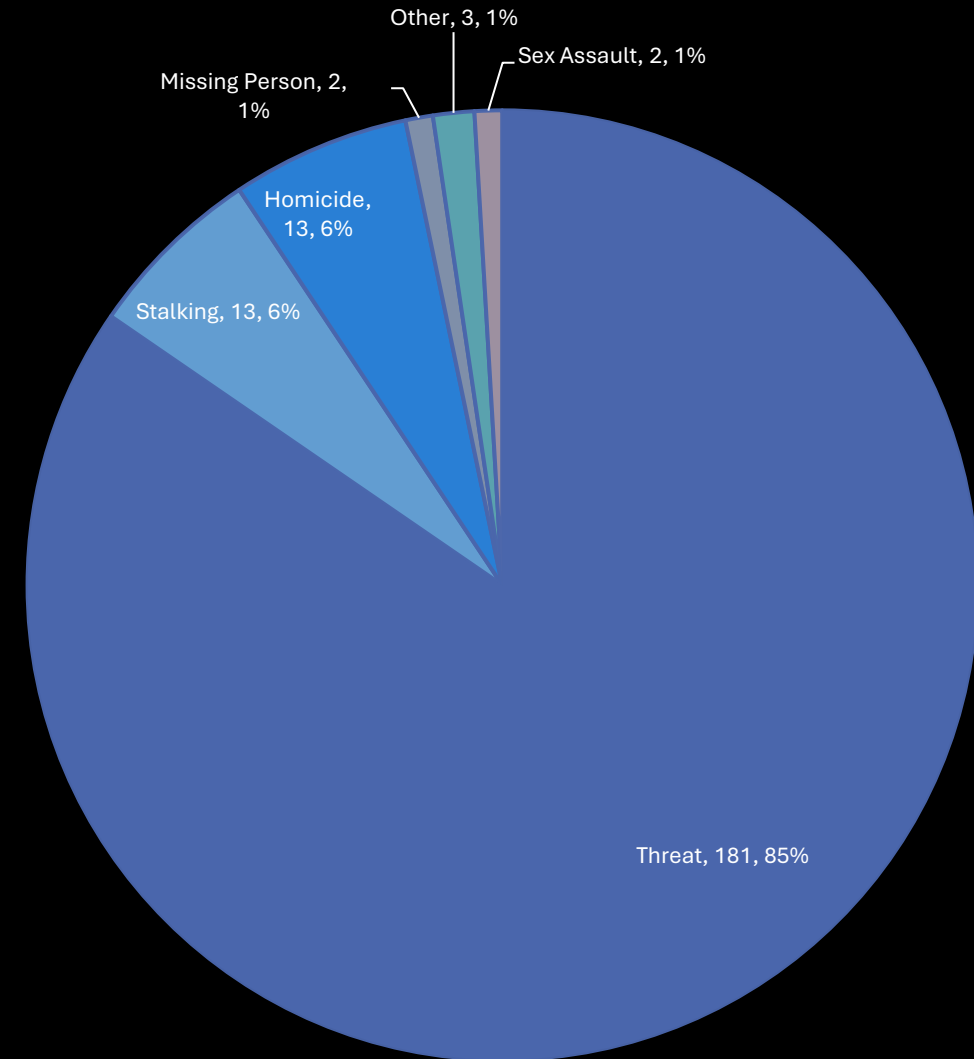
4 members of BSU in
2021



2022

216 requests, up from
195 in 2021.

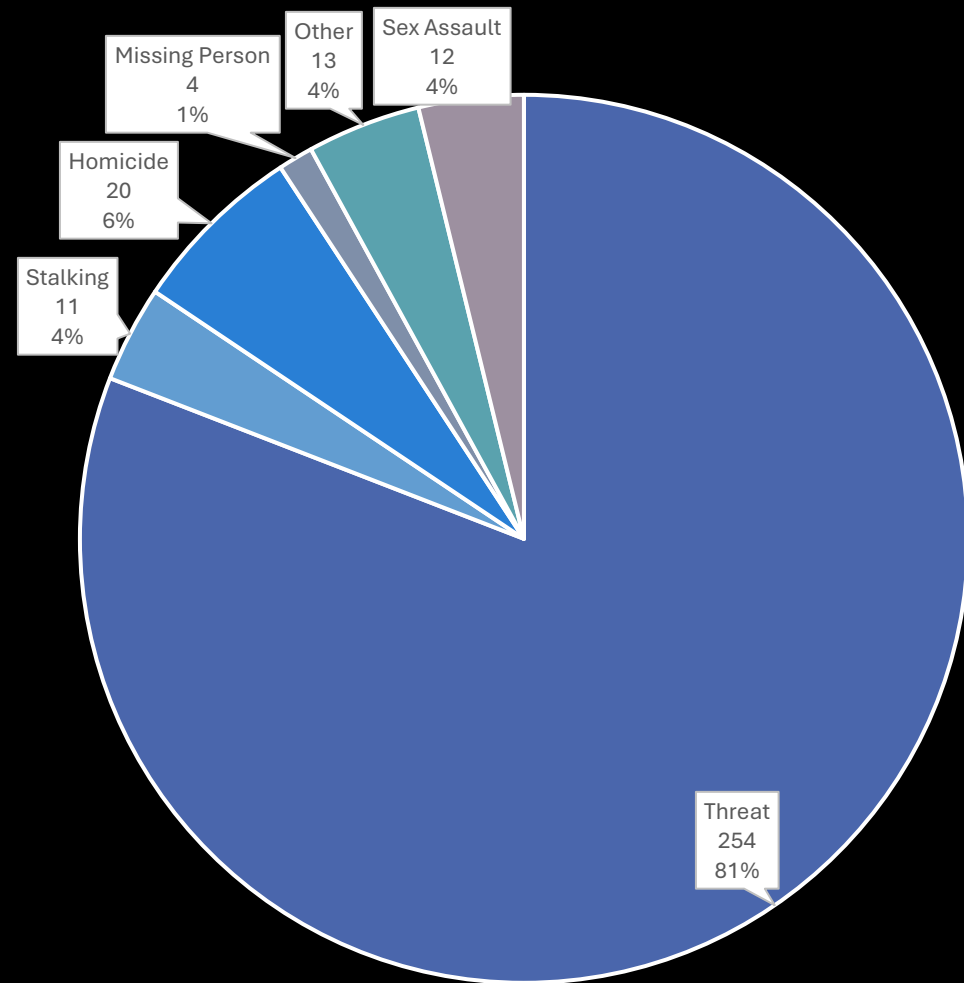
4 members of BSU.



2023

314 requests, up from
216 in 2022.

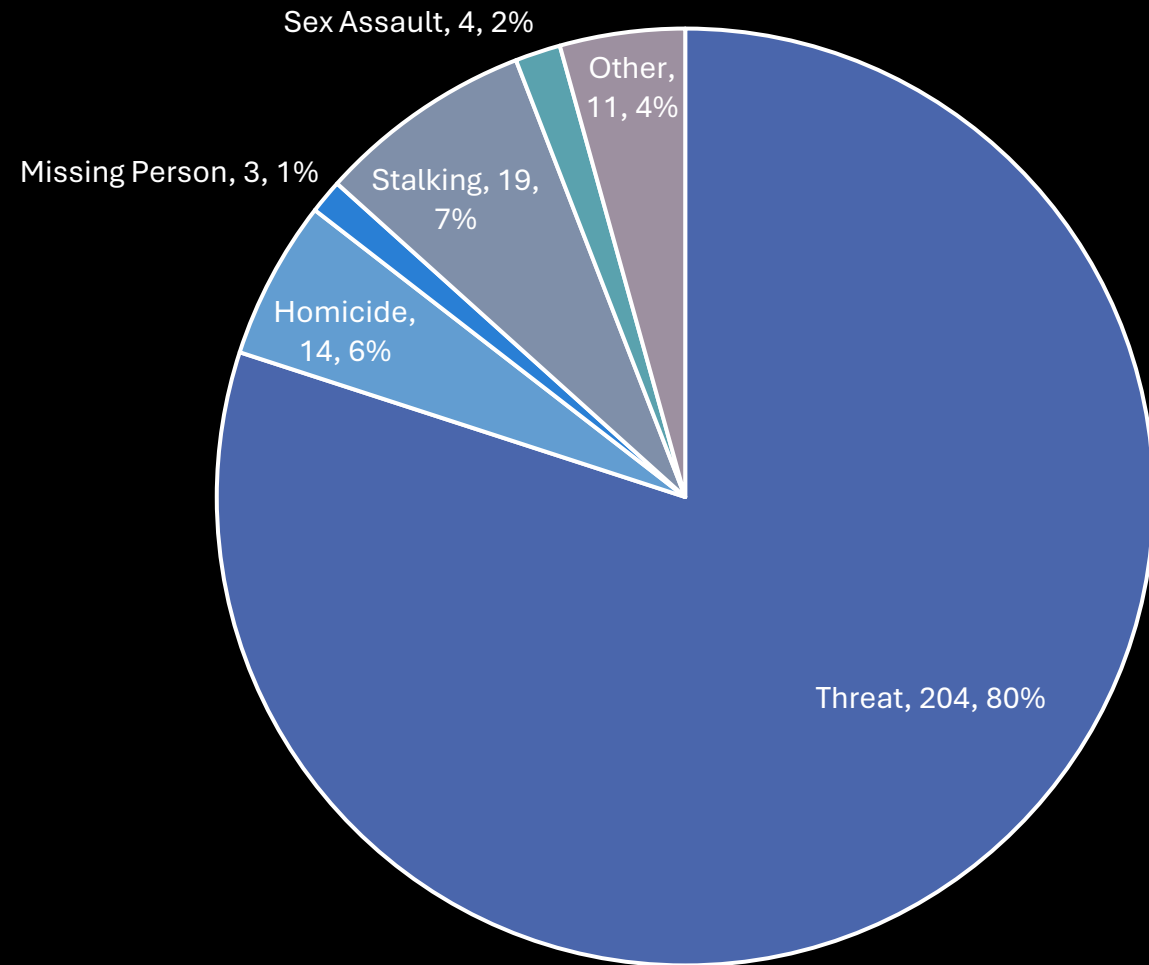
5 members of BSU.



2024

258 cases, down from
314 in 2023.

Currently, 6 members of
BSU.



SLED BSU & SC Dept. of Education

BSU assisted the DOE in developing the best practice guide for School-Based Behavioral Threat Assessment and Management.

Currently, BSU is providing training in BTAM to SC School Districts throughout the state to develop their School-Based Threat Assessment and Management Teams.

STATE OF SOUTH CAROLINA
DEPARTMENT OF EDUCATION



SCHOOL-BASED BEHAVIORAL THREAT ASSESSMENT AND
MANAGEMENT:
BEST PRACTICES GUIDE FOR SOUTH CAROLINA K-12 SCHOOLS
2ND EDITION

OCTOBER 2023

Statue Modifications Recommendations

- Sec 16-3-1040 (A) & (B). Threatening the life, person, or family of public official or public employee.

Unlawful for a person knowingly and willfully to deliver or convey...contains a threat to take the life or to inflict bodily harm...

Clarify convey to include threats disclosed to a third party if it is reasonable the public official or employee would become aware of the threat.

- Sec 16-17-430 (A) (2). Threaten in a telephone communication or any other electronic means an unlawful act with the intent to coerce, intimidate or harass another person;

Include “or in writing or any other means”

Increase penalty for 16-17-430 (A) from a misdemeanor fined not less than one hundred dollars nor more than five hundred dollars or imprisoned not more than thirty days to “not more than one year.” (H. 3889 offers ninety days).

Statue Modifications Recommendations

Disrupt school or college.

- Sec16-17-420 (A) ...Not a student...threatening physical harm to a student or a school or college...~~while on school property...has the present ability...~~a felony...not more than five years. (H. 3889).
- Sec 16-17-425 (A)...A student...~~guilty of a misdemeanor~~ felony, ...~~not more than one year~~ not more than five years. (H. 3889).



SLED Behavioral Science Unit



SPECIAL VICTIMS UNIT:



Department of Child Fatalities

Forensic Art Unit

Vulnerable Adults Investigations Unit

Trista Baird, Captain Special Victims Unit

Special Victims Unit

Captain



Administrative Lieutenant

Child Fatality/
Vulnerable Adult Agent

Forensic Art Agent

Forensic Art Agent

Administrative
Coordinator

Administrative
Coordinator

Child Fatality Lieutenant -
Team 1

Child Fatality Agent

Child Fatality Agent

Child Fatality Agent

Child Fatality Agent

Child Fatality Agent

Child Fatality Agent

Child Fatality Agent

Child Fatality Lieutenant -
Team 2

Child Fatality Agent

Child Fatality Agent

Child Fatality Agent

Child Fatality Agent

Child Fatality Agent

Child Fatality Agent

Vulnerable Adult Lieutenant

Vulnerable Adult Agent

Vulnerable Adult Agent

Vulnerable Adult Agent

Vulnerable Adult Agent



SVU Board and Committee Membership

Capt. Baird:

- Children's Justice Act Task Force, *Chair*
- SC Birth Outcomes Initiative, *Safe Sleep Workgroup*
- SC Fetal and Infant Mortality Review Team
- SC Law Enforcement Assistance Program (SCLEAP), *Peer Team Member*
- SC Network of Children's Advocacy Centers (SCNCAC) Board of Directors, *Community Board Member*

SVU Partnerships



SVU works closely with:

- Attorney General's Office
- Coroners
- Department of Disability and Special Needs
- Department of Labor, Licensing and Regulation
- Department of Mental Health
- Department of Public Health
- Department of Social Services
- Lexington Medical Center
- Local law enforcement agencies
- Solicitors
- South Carolina Network of Children's Advocacy Centers
- State Long Term Care Ombudsman's Office



Importance of SLED Special Victims Unit

SVU encompasses three specialized units that speak for some of the most vulnerable residents in the State of South Carolina. As statutorily mandated units, these agents have expertise and training in very specific fields. As such, they are a strong resource for local, state, and federal entities working in South Carolina who may not have the manpower, knowledge, or resources available. In 2024, SVU opened 612 cases and conducted 135 forensic interviews.

"SLED's Special Victims Unit and the Lancaster County Sheriff's Office make an excellent team through their collaborative efforts and shared commitment to justice. By combining SLED's specialized expertise in handling sensitive and complex cases with the Sheriff's Office's in-depth local knowledge and resources, they enhance their ability to support victims and solve crimes effectively. Their seamless coordination ensures a thorough and compassionate approach to addressing the needs of vulnerable individuals in the community."

Captain Mike Miller, Lancaster County Sheriff's Office

"The CARE House of the Pee Dee views SLED as an integral investigative partner, working alongside us to ensure the safety and future of South Carolina's children."

Meg Temple, Executive Director CARE House of the Pee Dee



Importance of SLED Special Victims Unit

"The Charleston Police Department's Investigation Division routinely partners with SLED's Forensic Art Unit during major investigations. They are a vital resource to investigators and are willing to respond 24 hours a day, 7 days a week, often with no advance notice. Their thorough and efficient responses have advanced several of our criminal investigations. Forensic sketches play a crucial role in police investigations by turning witness memories into visual leads, helping to identify suspects and bring clarity to cases. We are grateful for the expertise this unit provides, as we do not have an equivalent resource available."

Deputy Chief Andre Jenkins, Charleston Police Department

"The SLED Special Victims Unit has been a great asset to the York County Sheriff's Office and the citizens of York County as a whole. Every investigator in the unit has always been willing and available to provide assistance with any investigations. The investigators in this unit are a viable part to the Child Death Task Force and have provided much needed assistance and guidance in those investigations."

Lt. Joey Wallace, York County Sheriff's Office

Importance of SLED Special Victims Unit



"I wanted to personally thank your agents for their professionalism and their expertise in working with my office with child fatality deaths. They are always available and provide my office with immense help obtaining records, logistical help, and contacting agencies outside my county. They are truly an asset and dedicated to the victims. It is a pleasure to work with them on these sad and unfortunate deaths."

Coroner Robbie Baker, Sumter County

"For my agency, the SVU is an extremely vital and integral part of our child death investigations. Your unit's assistance and cooperation is much appreciated in the unfortunate cases we investigate involving children."

Coroner Keith von Lutcken, Florence County

"The Special Victims Unit plays an integral role in our child death investigations at the York County Coroner's Office. The unit has been such a great resource for our office to be able to depend on the expertise they offer from the initial page, on-scene, child fatality reviews to the closing of a case. Our improvement over the years, in child death investigations, are a direct result of the continued support we have received from our SLED agents."

Chief Deputy Coroner Christina Westover, York County

Importance of SLED Special Victims Unit



“VAIU operates with an agent 365 24/7 answering complaints for residents living in long-term care facilities. This time allows the residents, staff, and relatives access to a live agent to discuss ANE and or residents’ rights complaints which is vital to protecting residents from their abusers. In addition, it is helpful that your agents and or staff would sometimes contact the Providers to gather more clarifying information for the report which typically gives pertinent information to properly vet the complaint.

The SLED Intake information that you provide the LTCOP is a head start for us to gather our game plan in how to advocate for the resident and or residents properly and promptly.”

Tammy S. Keller – Long Term Care Ombudsman, Client Advocate III

“As I approach my 20th year with the Coroner's office, I have seen multiple changes and additions involving death investigation processes and collaborations with other agencies. Among those, was one of the most beneficial collaborations of all, is with SLED SVU. Many cases that are difficult to prove come to fruition due to the expertise of SVU and the collaborative environment they provide and encourage. Through these efforts, truth is discovered, and justice is sought. It's a proverbial team huddle approach at the beginning and a proverbial high five from all team members at the end.”

Karla Deese, Lancaster County Coroner



Department of Child Fatalities

63-11-1900

- Responding to child deaths is a state and a community responsibility.
- The response by the state and community to the death must include an accurate and complete determination of the cause of death.
- Multi-disciplinary and multi-agency investigations and reviews of child deaths are the best approach.

63-11-1920, 63-11-1940

- The purpose of the department is to expeditiously investigate child deaths in all counties of the State.
- Upon receipt of a report of a child death from the county coroner or medical examiner, as required by Section 17-5-540:
 - investigate and gather all information on the child fatality
 - request assistance of any other local, county, or state agency to aid in the investigation



Department of Child Fatalities

17-5-540

- The coroner or medical examiner, within twenty-four hours or one working day, whichever occurs first, must notify SLED when a child dies in the county he serves:
 - as a result of violence
 - in any suspicious or unusual manner
 - when the death is unexpected and unexplained including, but not limited to, possible sudden infant death syndrome.
- Child – a person under eighteen years of age
- Unexpected death – includes all child deaths which, before investigation, appear possibly to have been caused by trauma, suspicious or obscure circumstances, or child abuse or neglect.
- Excludes traffic accidents and disease related deaths

Department of Child Fatalities



63-11-2400: South Carolina Child Abuse Response Protocol

- In the investigation of a known or suspected crime against a child, a multidisciplinary team must follow the South Carolina Child Abuse Response Protocol.
- Both law enforcement and the coroner's office should have an active role throughout the investigation.

63-11-1950: State Child Fatality Advisory Committee (SCFAC)

- Mandated to identify patterns in child fatalities that will guide efforts by agencies, communities, and individuals to decrease the number of preventable child deaths.
- Reviews completed investigations of deaths involving children deemed to be unexpected, unexplained, or suspicious in nature.
- SVU attends and presents closed cases to the SCFAC bimonthly.



Child Death Investigation TASK FORCE



- Comprised of multiple agencies, utilizing a team concept, for the sole purpose of investigating child deaths to ensure that proper investigations are done in all cases.
- Recommended Members: Sheriff's Office, Police Department(s), Coroner's Office, Department of Social Services, Solicitor's Office, Emergency Medical Services (EMS), Child Abuse Pediatrician, SLED SVU

Department of Child Fatalities — 2024



- Investigated 328 child fatalities
- Investigated 25 child abuse/neglect cases
- Presented 177 cases to the State Child Fatality Advisory Committee
- Responded to 207 scenes to assist local law enforcement and coroners
- Conducted 17 trainings on CDITF and child death investigations, which approximately 531 people attended
- Average caseload per agent: 9.31
- Agents also assist local agencies with cases of severe child abuse and/or neglect



Department of Child Fatalities — 5 Year Stats

YEAR	CHILD DEATHS INVESTIGATED	CHILD DEATH SCENES RESPONDED TO
2024	328	207
2023	292	182
2022	321	177
2021	298	145
2020	237	88

From 2020 to 2024, there was a 38.4% increase in child fatalities investigated and a 135% increase in scenes responded to.

Department of Child Fatalities: Forensic Interviews



63-11-2400: South Carolina Child Abuse Response Protocol

- A **Forensic Interview** is a process where a child is given the opportunity to make a statement, in a safe supportive environment, about what happened to them. The child is questioned in a legally-sound, developmentally appropriate manner by a trained professional.
- When a victim or witness is a child (under the age of 18), only a minimal fact interview should be conducted until a forensic interview can be completed at a Children's Advocacy Center.

Department of Child Fatalities: Forensic Interviews



- In August 2022, a Memorandum of Understanding was created between SLED SVU and the South Carolina Network of Children's Advocacy Centers (SCNCAC) to conduct forensic interviews for local law enforcement agencies, Department of Social Services, and SLED at Children's Advocacy Centers across the state, in compliance with the South Carolina Child Abuse Response Protocol.
- The 8 SVU Agents who conduct forensic interviews have been trained in ChildFirst South Carolina (forensic interview training), participate in quarterly peer reviews by the SCNCAC, and attend advanced training in forensic interviewing.
- In 2024, the SVU Forensic Interviewers interviewed 135 children who were suspected victims of abuse or neglect, or witnesses to violence.

Department of Child Fatalities: Forensic Interviews



- Some agents were trained in conjunction with prosecutors throughout the state in becoming expert witnesses on child abuse at trial
- Agents who conduct forensic interviews also participate in quarterly peer reviews and on-going training

“Since the inception of our MOU with SLED in 2022, we have had a seamless working relationship. Everyone at SLED has been professional and knowledgeable; they thrive to align with our agency goals, South Carolina's response to child abuse, and the children's advocacy center's child first mission. We are incredibly grateful for the assistance and the services that SLED has provided to child victims whether it be interviewer or investigator.”

Hopeful Horizons Children's Advocacy Center Team

Forensic Art Unit



Forensic Art

- Any art that aids in the identification, apprehension, or conviction of criminal offenders,
Or
- Any art which aids in the location of victims or the identification of unknown deceased persons.

Forensic Art Unit



Services Offered

- Composite sketches
- Facial reconstructions
- Postmortem images
- Facial image comparisons
- Age progressions and age regressions
- Crime scene diagrams
- Security diagrams
- Court room exhibits
- Graphics projects

Forensic Art Unit — 2024



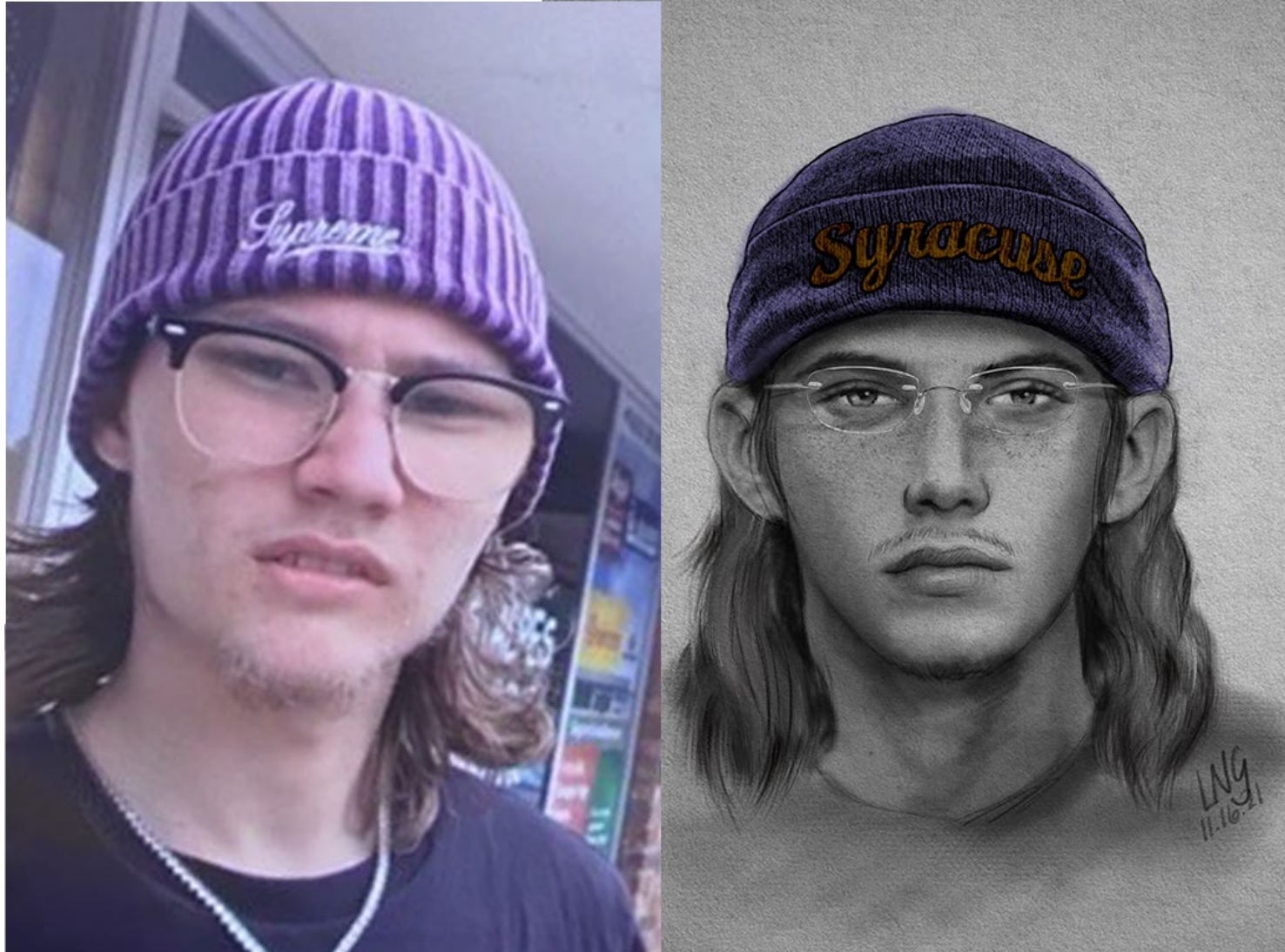
- In 2024, the FAU opened 89 cases
 - 14 composite sketches
 - 68 graphics projects
 - 2 age progression projects
 - 5 facial reconstruction
- FAU Special Agents responded to four counties statewide and North Carolina in reference to calls for assistance. The FAU also assisted on a case originating from Crawford County, Pennsylvania.
- FAU conducted two trainings on Forensic Art procedures, which approximately 17 people attended.

Forensic Art Unit — 5 Year Stats

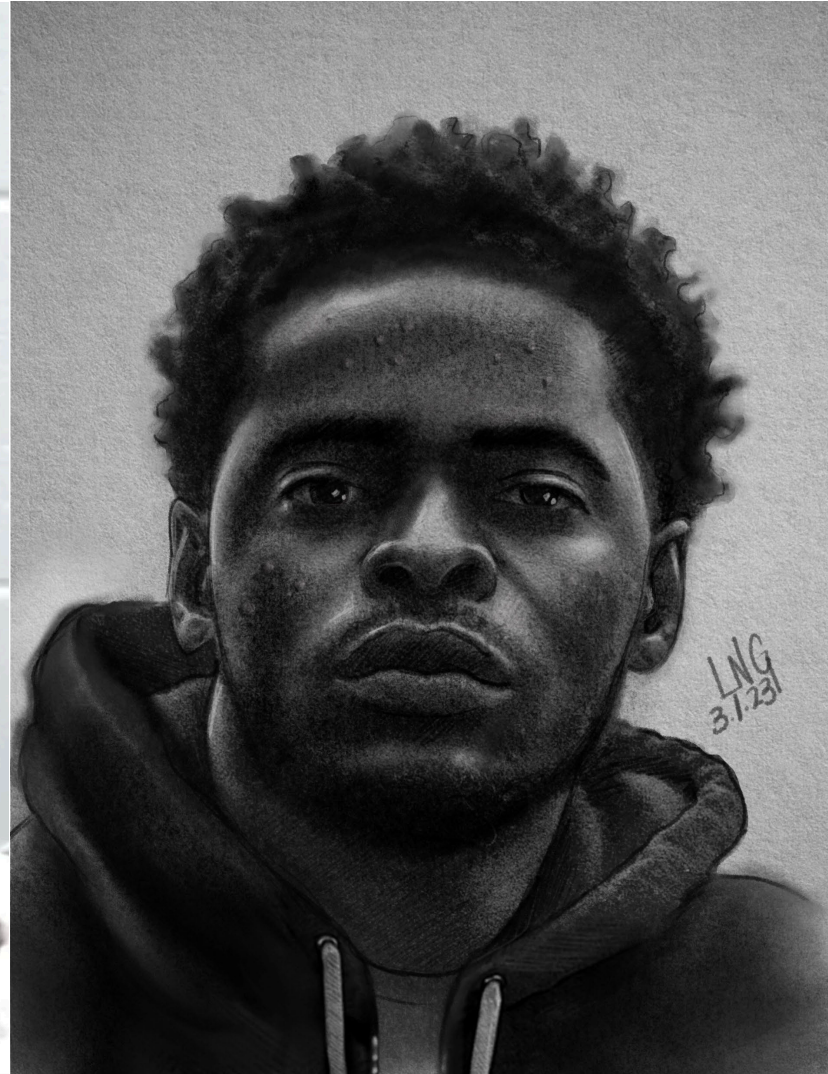


YEAR	Composite Sketches	Graphics Projects	Age Progression Projects	Facial Reconstruction
2024	14	68	2	5
2023	23	59	2	2
2022	16	46	1	2
2021	22	40	3	3
2020	22	31	0	3

Forensic Art Unit



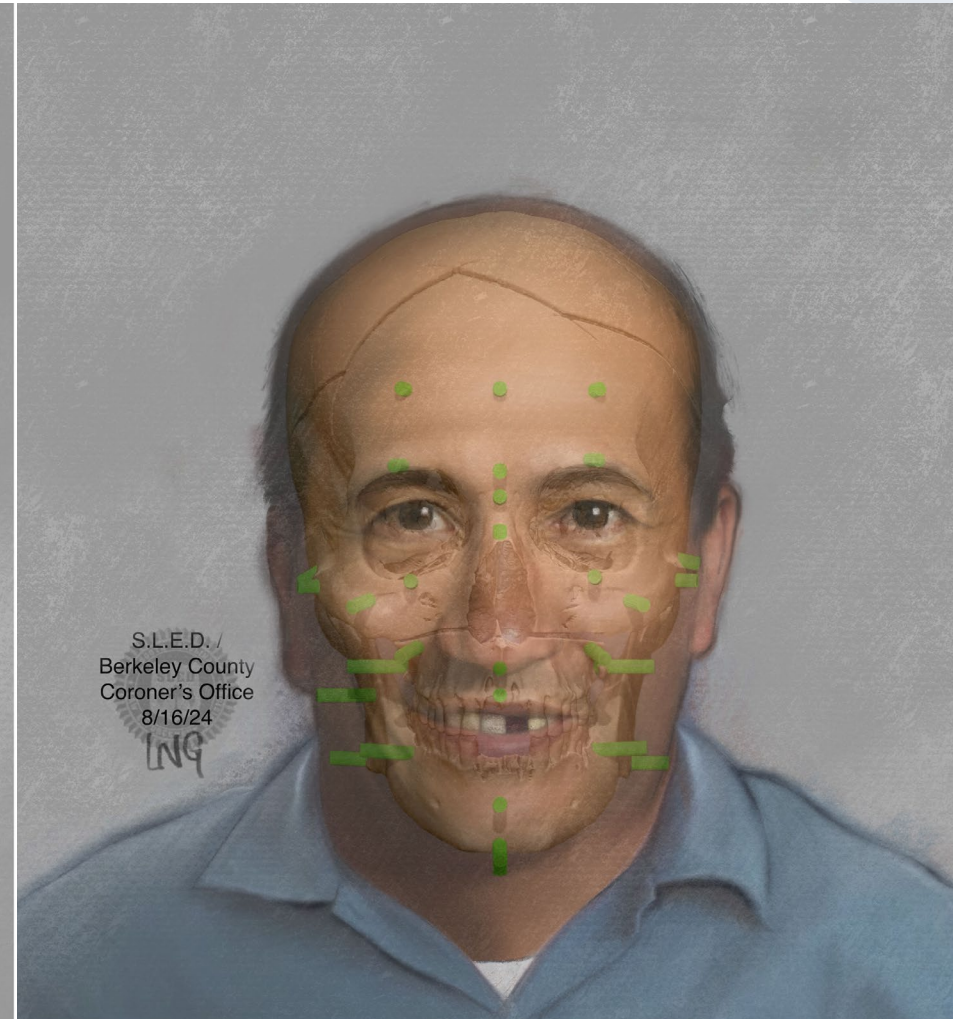
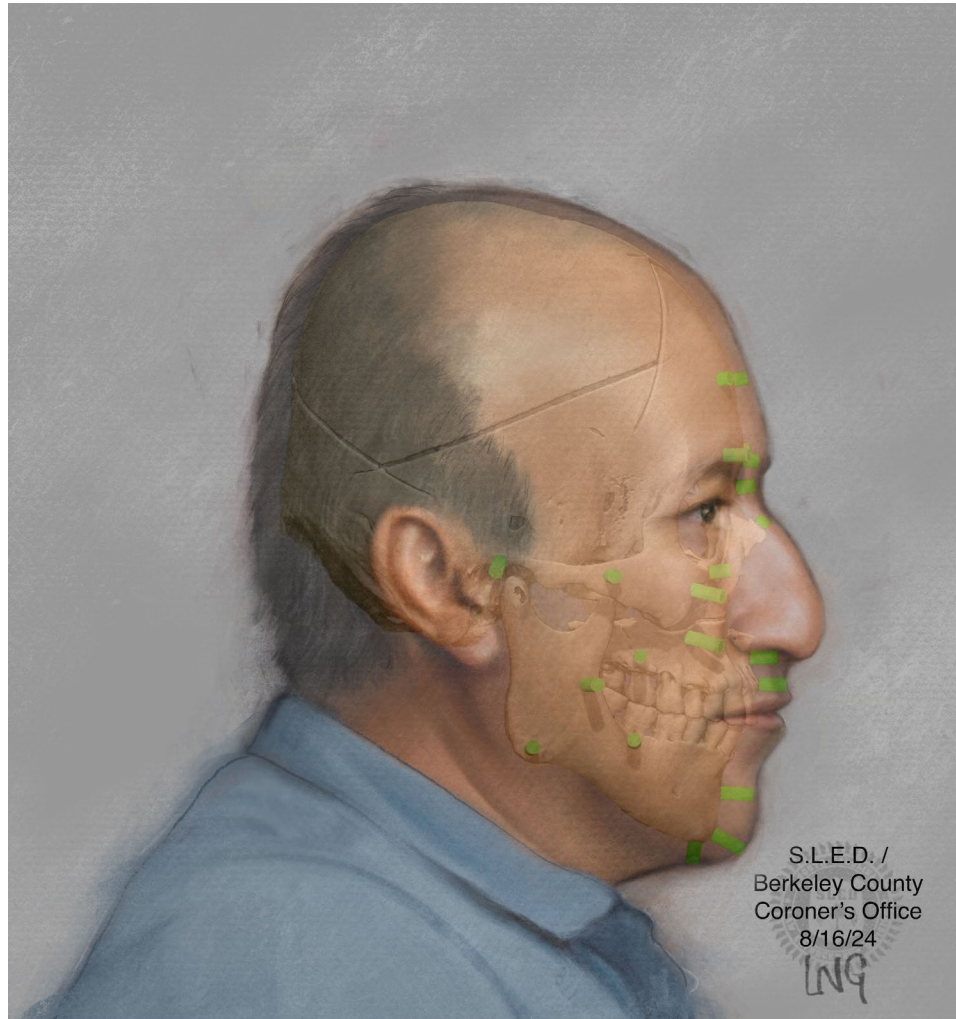
Forensic Art Unit



Forensic Art Unit



Forensic Art Unit





Vulnerable Adults Investigations Unit (VAIU)

43-35-15/43-35-530: Omnibus Adult Protection Act (OAPA)

- VAIU operates the Vulnerable Adult Hotline (1-866-200-6066) 24/7, which receives intakes from state and local care facilities that are operated or contracted for operation by Department of Mental Health (DMH) and the Disabilities and Special Needs Board (DDSN) involving vulnerable adult fatalities, neglect, abuse, and exploitation.
- The VAIU completes thorough investigations on all vulnerable adult neglect, abuse, and exploitation cases that occur in facilities operated by the Department of Mental Health (DMH) and the Disabilities and Special Needs Board (DDSN), while working closely with and assisting other law enforcement agencies throughout the state.
- VAIU investigates all fatalities for individuals in DMH or DDSN facilities, regardless of being state operated or contracted.
- If the facility is contracted for operation by SCDMH or SCDDSN, any criminal allegation is vetted to local law enforcement in the jurisdiction where it took place.
- Intakes that are not criminal in nature are vetted to the State Long Term Care Ombudsman's Program or Department of Social Services – Adult Protective Services.



Vulnerable Adults Investigations Unit (VAIU)

43-35-10: Omnibus Adult Protection Act (OAPA)

A Vulnerable Adult is defined as:

- A person 18 years of age or older who has a physical or mental condition which substantially impairs the person from adequately providing for his or her own care or protection.
- This includes a person who is impaired in the ability to adequately provide for the person's own care or protection because of the infirmities of aging including, but not limited to, organic brain damage, advanced age, and physical, mental, or emotional dysfunction.
- A resident of a facility is a vulnerable adult.
 - Facility – a nursing care facility, community residential care facility, a psychiatric hospital, or any residential program operated or contracted for operation by the Department of Mental Health or the Department of Disabilities and Special Needs



Vulnerable Adults Investigations Unit (VAIU)

43-35-310 Adult Protection Coordinating Council

- Mandated to coordinate the planning and implementation efforts of the entities involved in the adult protection system, facilitate problem resolution and develop action plans to overcome problems identified within the system, develop methods of addressing the ongoing needs of vulnerable adults, and remain abreast of new trends in adult protection from national clearinghouses and other appropriate entities.
- VAIU is an appointed member, attends and provides statistics to the Adult Protection Coordinating Council quarterly.

43-35-560 Vulnerable Adults Fatalities Review Committee

- Purpose of the Vulnerable Adult Fatalities Review Committee is to decrease the incidence of preventable vulnerable adult deaths
- VAIU attends and presents cases to the Vulnerable Adults Fatalities Review Committee bimonthly.



Vulnerable Adults Investigations Unit (VAIU) — 2024

- VAIU Hotline received 821 intakes and 643 calls that did not meet VAIU criteria
- VAIU opened 172 cases
 - 6 cases originated from requests from local law enforcement agencies
- 499 intakes were vetted to other state agencies or local law enforcement for investigation (did not meet VAIU criteria)
- VAIU presented 144 cases to the Vulnerable Adult Fatalities Review Committee
- Conducted 33 training sessions on Abuse, Neglect, and Exploitation, which approximately 1,226 direct care staff and facility administrators attended
- Average caseload per agent: 11 cases

Vulnerable Adults Investigations Unit (VAIU) — 5 Year Stats



YEAR	Hotline Intakes	VAIU Investigations	Cases Vetted to Other State/Local Agencies
2024	821	172	499
2023	947	206	497
2022	845	204	441
2021	890	242	435
2020	766	216	337

From 2020-2024, there was a 7.2% increase in hotline intakes, and a 20.4% decrease in investigations opened.

CONCLUSION & QUESTIONS



Captain Trista Baird

Cell: 803-429-5600

Email: tbaird@sled.sc.gov



VEHICLE CRIMES-SOCIAL SECURITY FRAUD UNIT

South Carolina House Oversight Committee,
Columbia, South Carolina

Craig Harrelson, Captain/Investigative
Services/Vehicle Crimes-Social Security Fraud Unit

CRAIG HARRELSON, CAPTAIN



ABOUT

I'm Craig Harrelson, the Captain over the Vehicle Crimes and Social Security Fraud Unit at SLED. I have been in law enforcement for 32 years, beginning my career as a State Trooper assigned to Horry County, later becoming the assistant team leader of the Pee Dee MAIT team (SCHP's collision reconstruction team). I have testified as an expert in Summary Court and General Sessions court. I was selected to become the police chief at Tri-County Technical College in Anderson before coming to SLED in 2008. I was assigned to the Piedmont Region (Greenville) where I investigated high profile cases such as misconduct of public officials and officer involved shootings. Ten years later, I became the supervisor over the Vehicle Crimes Unit which was part of the Midlands Region at the time, and when the unit became a stand-alone unit in 2023, I was promoted to Captain over it.

VEHICLE CRIMES UNIT



ROLE AND SERVICES PROVIDED

The SLED Vehicle Crimes Unit was created to assist the SCDMV with criminal investigations originating through transactions at their offices such as vehicle title fraud, driver's license fraud, car dealership fraud, and vehicle identification issues, and to provide other local agencies with technical assistance concerning the identification of chopped-burned-stolen vehicles, complex auto theft rings, identity fraud and vehicle fraud investigations, and scrapyard/salvage yard issues. Vehicle Crimes agents are also trained to determine authenticity of SCDMV issued vehicle titles and driver's licenses.



SOCIAL SECURITY FRAUD



ROLE AND SERVICES PROVIDED

The Social Security Fraud Unit is currently comprised of one team leader from the SSA Office of Inspector General (OIG) and two agents from SLED. These agents investigate fraudulent disability claims under SSA's Title II and Title XVI (SSI and SSDI) programs and usually begin with referrals from anonymous sources, private citizens, local law enforcement agencies, or from the SSA's Office of Disability Adjudication. The unit pursues investigations that are criminal in nature and currently has multiple cases under investigation or under consideration by the United States Attorney's Office.

The Vehicle Crimes and Social Security Fraud Units were a component of the Investigative Services Midlands Region until 2023 when they combined and became a stand-alone unit in the Investigative Services Division.



VEHICLE CRIMES-SOCIAL SECURITY FRAUD UNIT

Staffing

The unit consists of a Captain, a Lieutenant, seven agents assigned to investigate vehicle crimes, and two agents that investigate Social Security fraud. As a highly specialized unit, agents with prior investigative and law enforcement field experience fill these positions, coming to SLED from the SC Highway Patrol and other law enforcement agencies. *Our agents bring an average of 22 years of law enforcement experience to this unit.* These agents were highly regarded troopers and officers at their prior agencies having received awards such as officer of the year, deputy of the quarter, DUI officer of the year, and Trooper of the Year in their respective Troops. Because of their professionalism and vast experience, vehicle crimes agents are heavily utilized on special details at SLED to include crime suppression details, festivals, and football game assignments. Two agents in the unit are full time members of the SLED SWAT team and one agent is a member of the SLED Dive Team. Annual staffing in the Vehicle Crimes Unit since 2019 has been steady with the number of vehicle crimes investigators averaging seven, with an additional three investigating Social Security fraud cases.

TRAINING-CERTIFICATIONS-PARTNERSHIPS-SPECIAL EQUIPMENT



VEHICLE CRIMES

Vehicle Crimes agents receive training from SLED and the SC Criminal Justice Academy. They also receive specific training in interviewing techniques, investigative techniques, as well as auto theft/vehicle identification training during sessions of the Southeastern Association of Auto Theft Investigators and the National Insurance Crime Bureau (NICB). Agents maintain proprietary knowledge of hidden VIN locations on vehicles and heavy equipment which enable them to properly identify burned, chopped, or heavily damaged vehicles. Agents sometimes utilize acid restoration to see ground and obliterated VINs. Originally, the Vehicle Crimes Unit focused mainly on cases originating from SCDMV; however, the need arose for more training in the auto theft area, so two agents were sent to the Texas DPS auto theft school in Corpus Christi, Texas. We discovered that that course, along with other courses around the country were already too basic for our skill level, and the agents found that the best training was actually field experience investigating these cases. Auto Theft specific conferences attended by our agents also center around newer investigative techniques and trends.

Vehicle Crimes & Social Security Fraud



It all starts with a car

Studies show that motor vehicles are involved in more than 75% of the crimes committed every year in the United States¹, many of which are stolen.

As technology improves the everyday quality of life, it also improves the capabilities of both criminals and the investigative resources to help combat the crimes they commit.

1. Gardner, Thomas and Terry Anderson. Criminal Evidence: Principles and Cases. 2015

TRAINING-CERTIFICATIONS-PARTNERSHIPS-SPECIAL EQUIPMENT



VEHICLE CRIMES (Cont.)

Vehicle Crimes Agents are trained to look past the public VIN on a vehicle and locate other hidden identifiers and VIN locations.

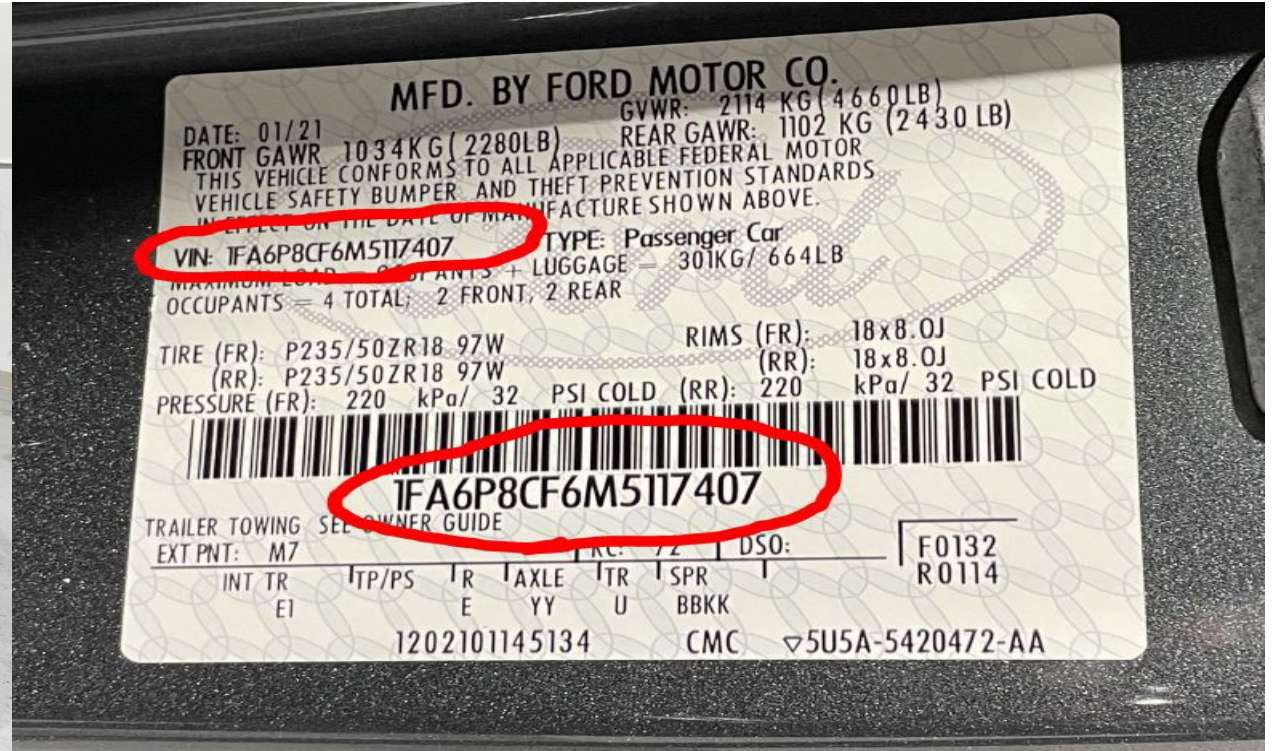


Vehicle Crimes & Social Security Fraud



VEHICLE CRIMES (Cont.)

We recently purchased ABRITES vehicle data retrievers that allow agents to electronically connect to vehicles and retrieve important information such as VIN data and associated vehicle component parts.

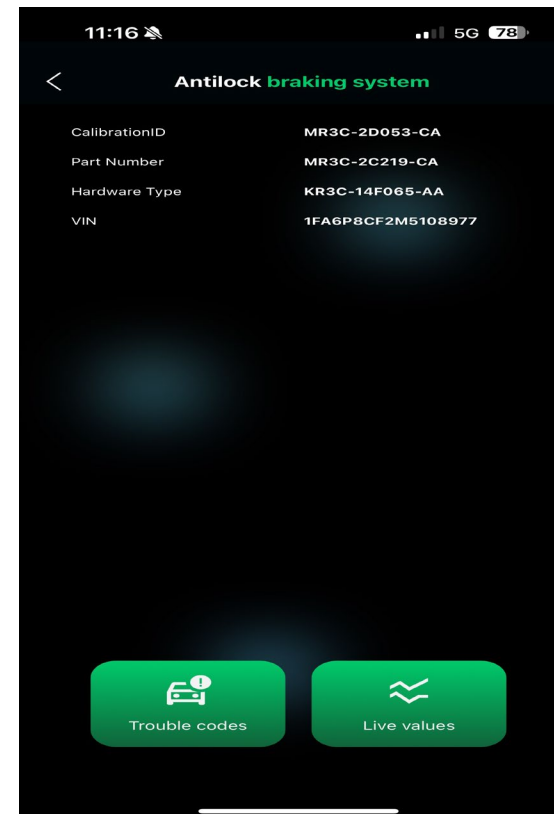
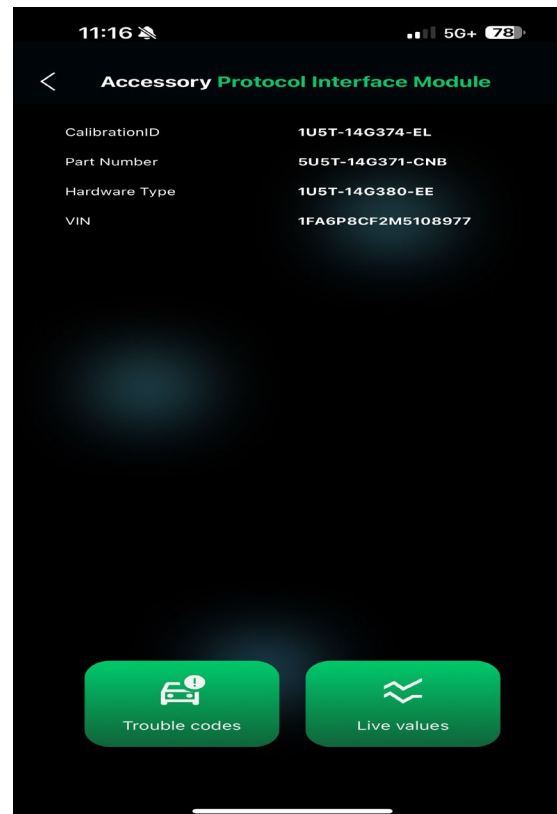


Vehicle Crimes & Social Security Fraud



Abrites use example: SLED case 56-24-0069 (cont.):

Using the Abrites VIN reader, Special Agents in the Vehicle Crimes Unit were able to quickly locate VINs associated with various component parts of the vehicle to find the true VIN (1FA6P8CF2M5108977) which belonged to a stolen vehicle from Michigan. Typical OBD ports on vehicles can be easily reprogrammed, but not other component parts.



TRAINING-CERTIFICATIONS-PARTNERSHIPS-SPECIAL EQUIPMENT



VEHICLE CRIMES (Cont.)

Vehicle crimes agents are assigned **mobile fingerprint readers** which allow them to positively identify individuals involved in identity theft, and we have been called by local jurisdictions to fingerprint deceased individuals in an effort to identify them. **We are working on a proposal to purchase a Berla system which will allow our agents to download infotainment system data in the field.** Currently, this information *can* be obtained by SLED's Computer Crimes Unit, but ideally, this could be performed in the field by Vehicle Crimes Unit agents without having to remove the system from a vehicle and bring it to Columbia, or having another agent respond from the Computer Crimes Unit.

Our agents receive vehicle registration information and other documents as needed from SCDMV and frequently partner with agents from NICB in their auto theft or fraud investigations.

TRAINING-CERTIFICATIONS-PARTNERSHIPS-SPECIAL EQUIPMENT



SOCIAL SECURITY FRAUD

Social Security Fraud agents receive investigative training through SLED and the SC Criminal Justice Academy, and they also pair with Federal counterparts during their investigations. Their investigations often entail the use of undercover vehicles and surveillance equipment such as cameras and video recorders provided by the Social Security Administration. These agents document and track their cases using "*TITAN*", a federal government case management system.

TRAINING-CERTIFICATIONS-PARTNERSHIPS-SPECIAL EQUIPMENT



SC AUTO THEFT INTELLIGENCE COUNCIL (SCATIC)

In 2023, the Vehicle Crimes Unit developed and implemented an auto theft intelligence council in SC. This council, SCATIC, is made up of auto theft investigators, police officers, National Insurance Crime Bureau agents, law enforcement analysts, and insurance company special investigators. Meetings are held quarterly in various parts of the state and is heavily attended by our partners from SC and neighboring states. Data and intelligence is shared at these meetings, and they also contain a training segment with various presenters from law enforcement, insurance companies, and other companies such as CarFax. Contact rosters are built and shared among attendees to facilitate information sharing in all parts of the state and southeast. At the beginning of 2025, NC announced the formation of their own intelligence group (NCATIC) which is modeled after SLED's.



AUTHORIZING STATUTE UNIQUE TO VEHICLE CRIMES

23-3-0175 SC CODE OF LAWS- SLED AUTHORIZED TO INSPECT JUNKYARDS, ETC.

This unit frequently utilizes an inspection statute that allows agents from the unit to conduct inspections at junkyards, scrap metal facilities, salvage yards, repair shops, and licensed businesses buying, selling, displaying, or trading new or used motor vehicles or parts of motor vehicles. This inspection authority is strictly for the purpose of locating stolen motor vehicles or investigating the titling of wrecked or dismantled vehicles. As a closely regulated industry, SLED's Vehicle Crimes Unit has a substantial interest in the value of these inspections due to the constant threat of motor vehicle theft and the marketing of stolen property. These locations have traditionally been hubs of criminal activity by their very nature.



AUTHORIZING STATUTES

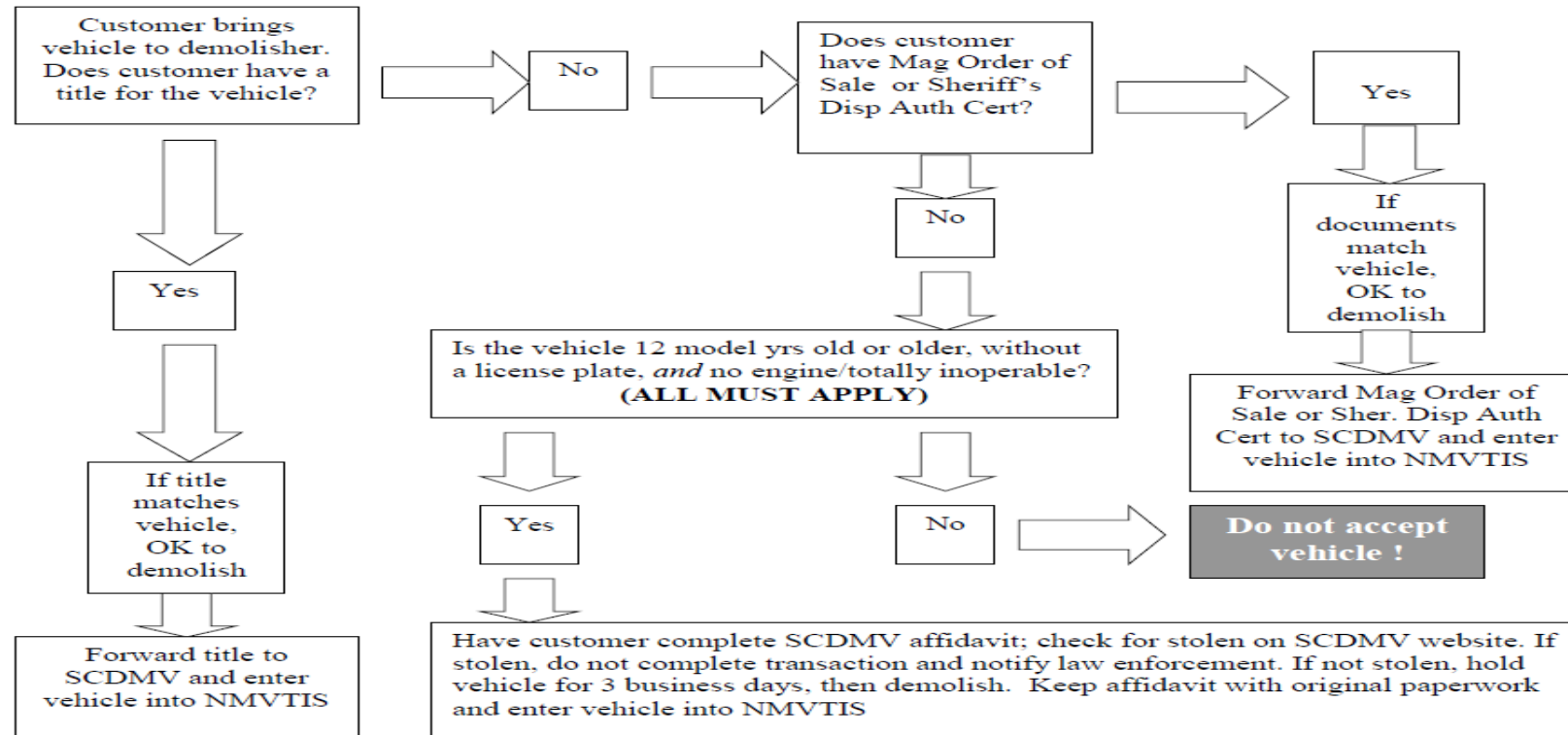
INSPECTION OF JUNKYARDS/SALVAGE YARDS

Concerning salvage yards, state law requires them to run a vehicle's VIN through the SCDMV "Red Light / Green Light" system before accepting it. This system tells the salvage yard operator whether the vehicle is stolen or not. **Most SC salvage yards are in compliance with doing this.** A benefit of this system is that we can also cross-reference it to see if a particular vehicle of interest has been brought in for scrapping. In 2023, our unit was assisting the Midlands Region with locating a vehicle of interest that was involved in a homicide. We checked the system initially with negative results. Six months later, a new search was conducted, and we got a hit. The vehicle had been brought to a scrapyard the prior day and was still there and had not been crushed yet. Investigators were able to seize the vehicle and take it for forensic processing.



AUTHORIZING STATUTES

INSPECTION OF JUNKYARDS/SALVAGE YARDS



Vehicle Crimes & Social Security Fraud 2019 Stats



VCU Agents	Cases Opened	SCDVM Referrals	Outside Agency Requests	Arrests	Stolen Vehicle Recoveries
8	498	280	218	123	\$3,100,000

SSF Agents	Cases Closed	Social Security Savings
4	171	\$16,000,000

Vehicle Crimes & Social Security Fraud 2020 Stats*



VCU Agents	Cases Opened	SCDVM Referrals	Outside Agency Requests	Arrests	Stolen Vehicle Recoveries
6	429	250	179	81	\$2,700,000

SSF Agents	Cases Closed	Social Security Savings
4	38	\$3,500,000

*Multiple COVID-19 restrictions which affected overall investigative requests and capacity

Vehicle Crimes & Social Security Fraud 2021 Stats*



VCU Agents	Cases	SCDMV Referrals	Outside Agency Requests	Self-Generated Cases	Arrests	Stolen Veh. Recoveries
7	561	327	166	68	70	\$2,900,000

SSF Agents	Cases Closed	Social Security Savings
3	17	\$48,000

*Multiple COVID-19 restrictions which affected overall investigative requests and capacity

Vehicle Crimes & Social Security Fraud 2022 Stats



VCU Agents	Cases	SCDMV Referrals	Outside Agency Requests	Self-Generated Cases	Arrests	Stolen Veh. Recoveries
7	633	298	141	194	67	\$5,200,000

SSF Agents	Cases Closed	Social Security Savings
3	50	\$4,100,000

Vehicle Crimes & Social Security Fraud 2023 Stats



VCU Agents	Cases	SCDMV Referrals	Outside Agency Requests	Self-Generated Cases	Arrests	Stolen Veh. Recoveries
8	646	358	192	96	84	\$10,600,000

SSF Agents	Cases Closed	Social Security Savings
2	39	\$4,300,000

Vehicle Crimes & Social Security Fraud 2024 Stats



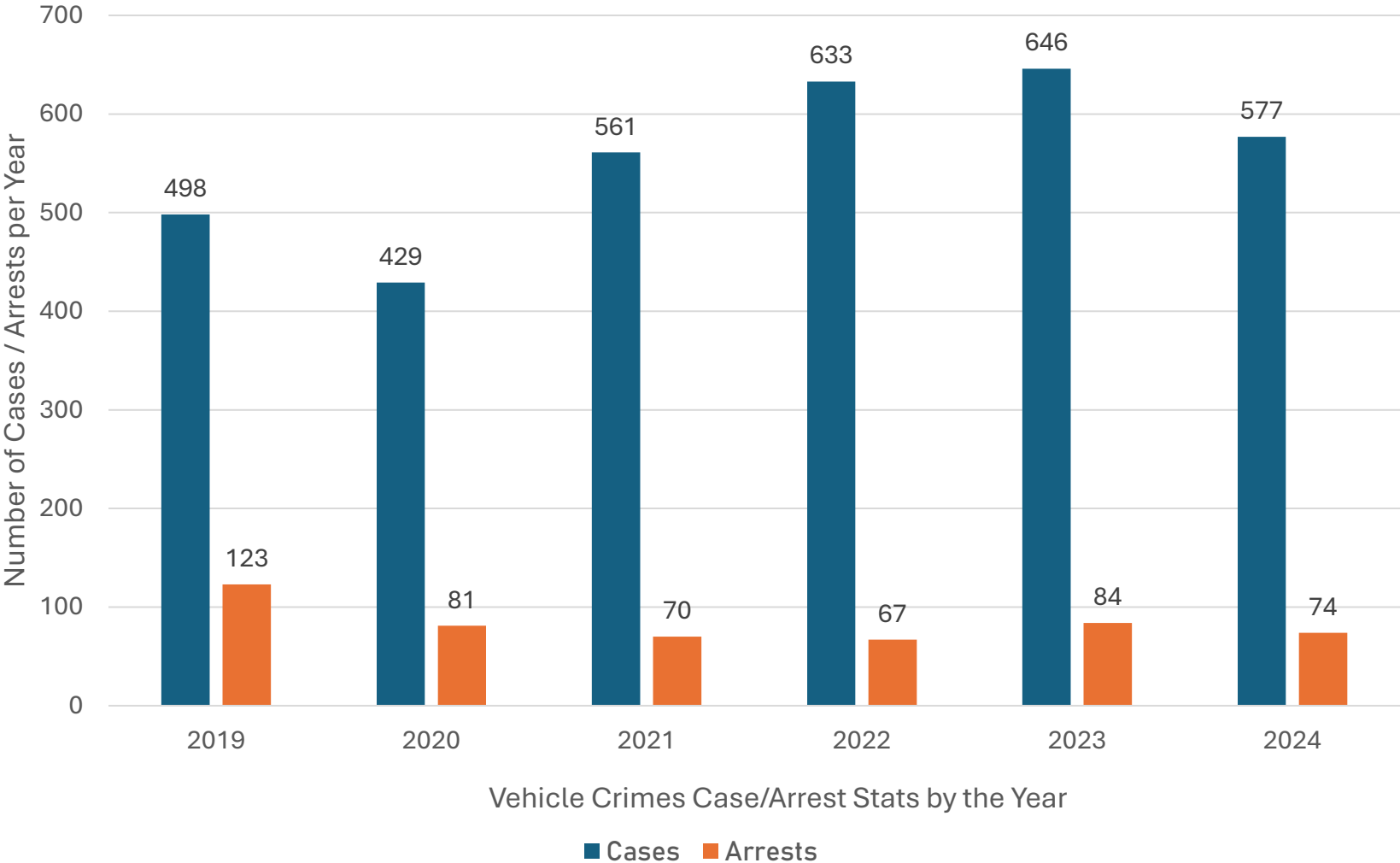
VCU Agents	Cases	SCDMV Referrals	Outside Agency Requests / Self-Generated Cases	Arrests	Stolen Vehicle Recoveries
7	577	240	337	74	\$10,163,745

SSF Agents	Cases Closed	Social Security Savings
2	33	\$2,979,725

Vehicle Crimes & Social Security Fraud



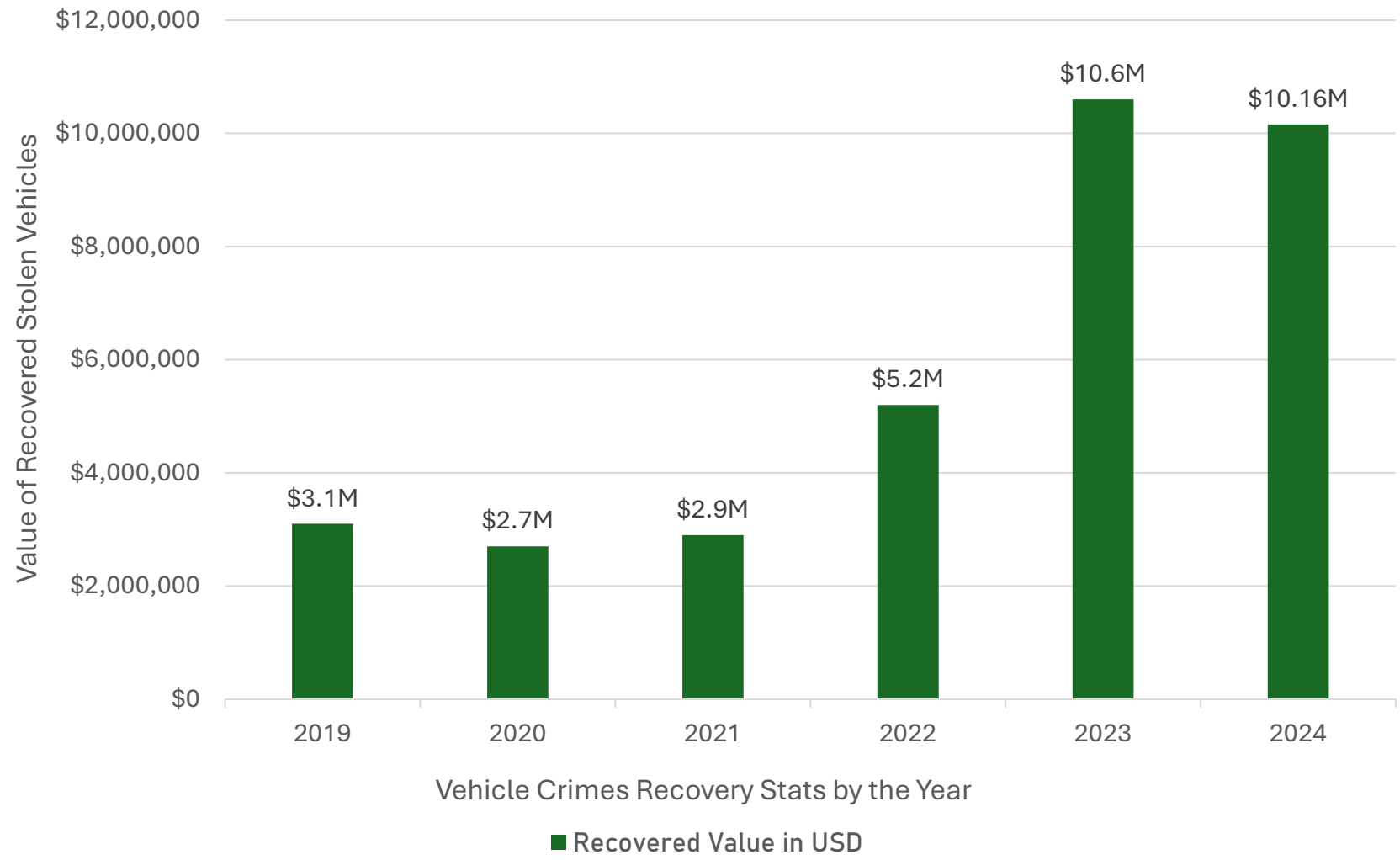
Vehicle Crimes Stats Summary



Vehicle Crimes & Social Security Fraud



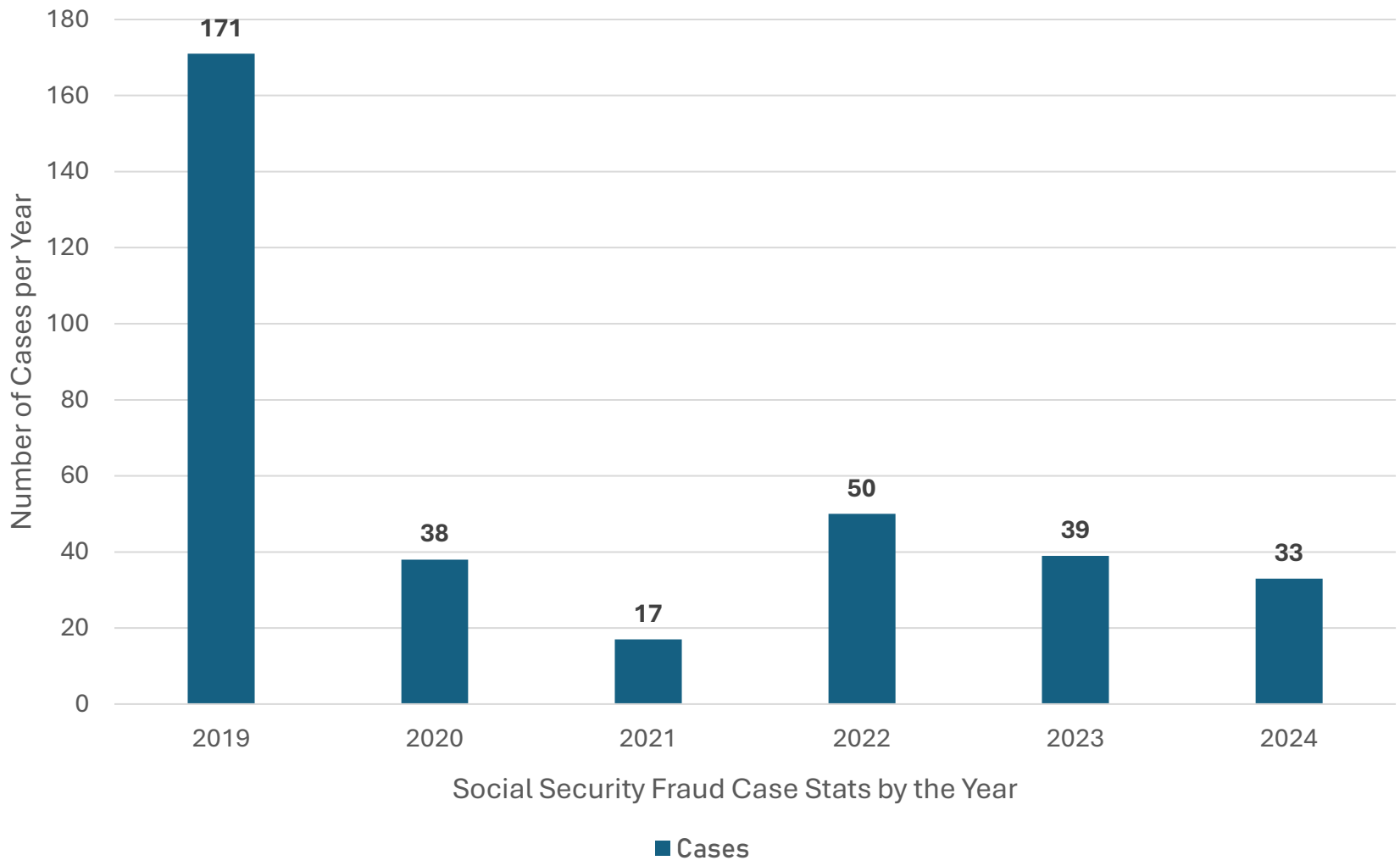
Vehicle Crimes Recovery Values in USD



Vehicle Crimes & Social Security Fraud



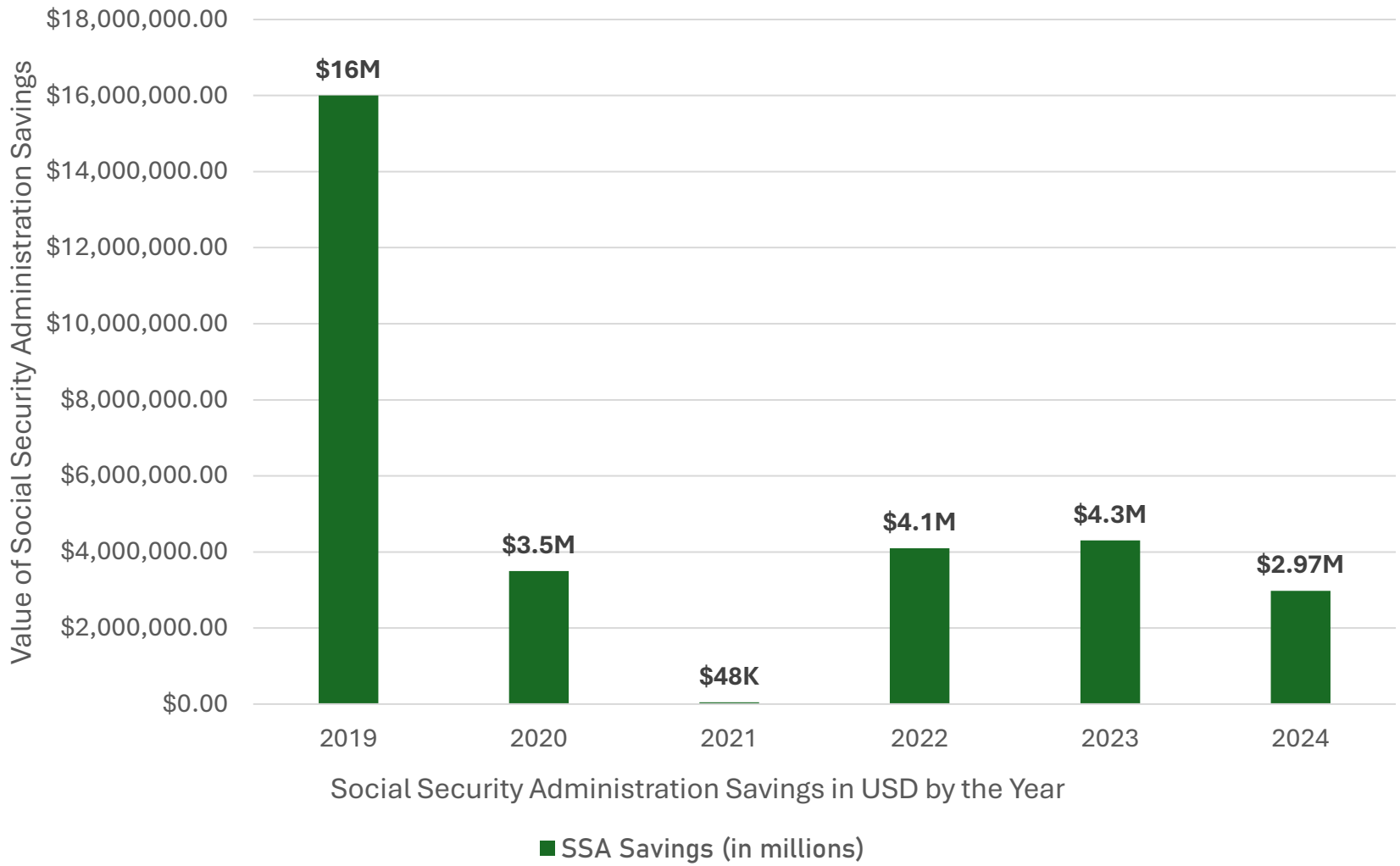
Social Security Fraud Stats Summary



Vehicle Crimes & Social Security Fraud



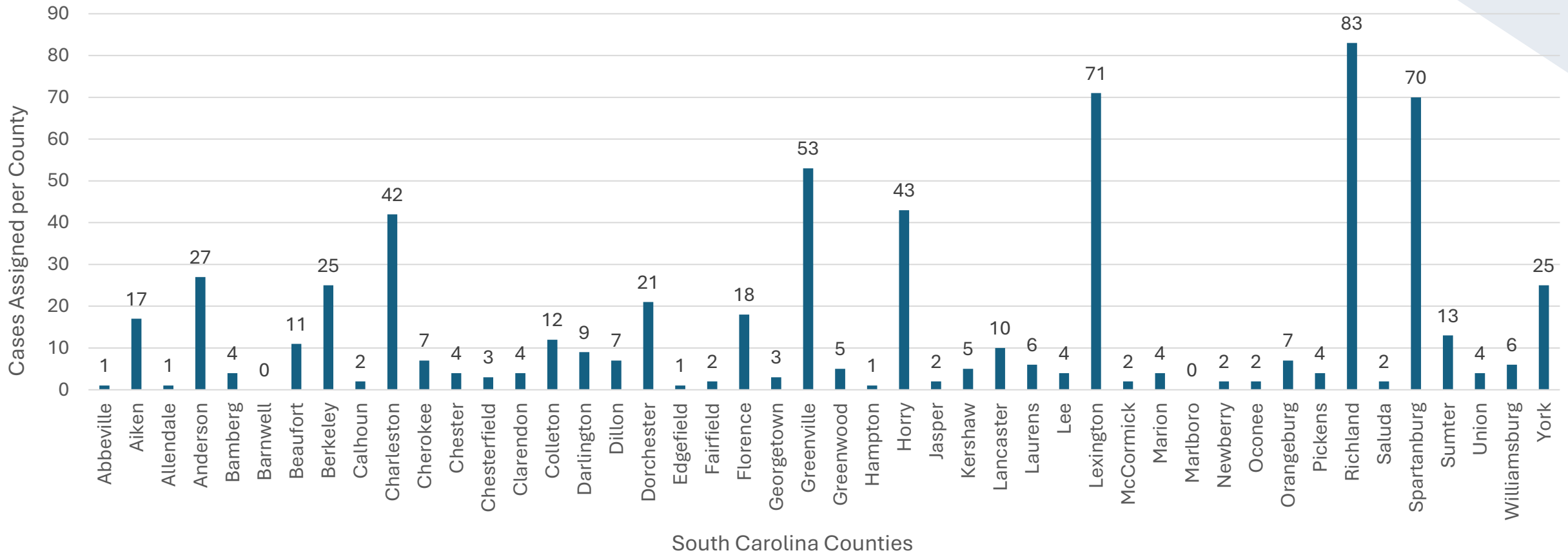
Social Security Administration Savings Summary



Vehicle Crimes & Social Security Fraud



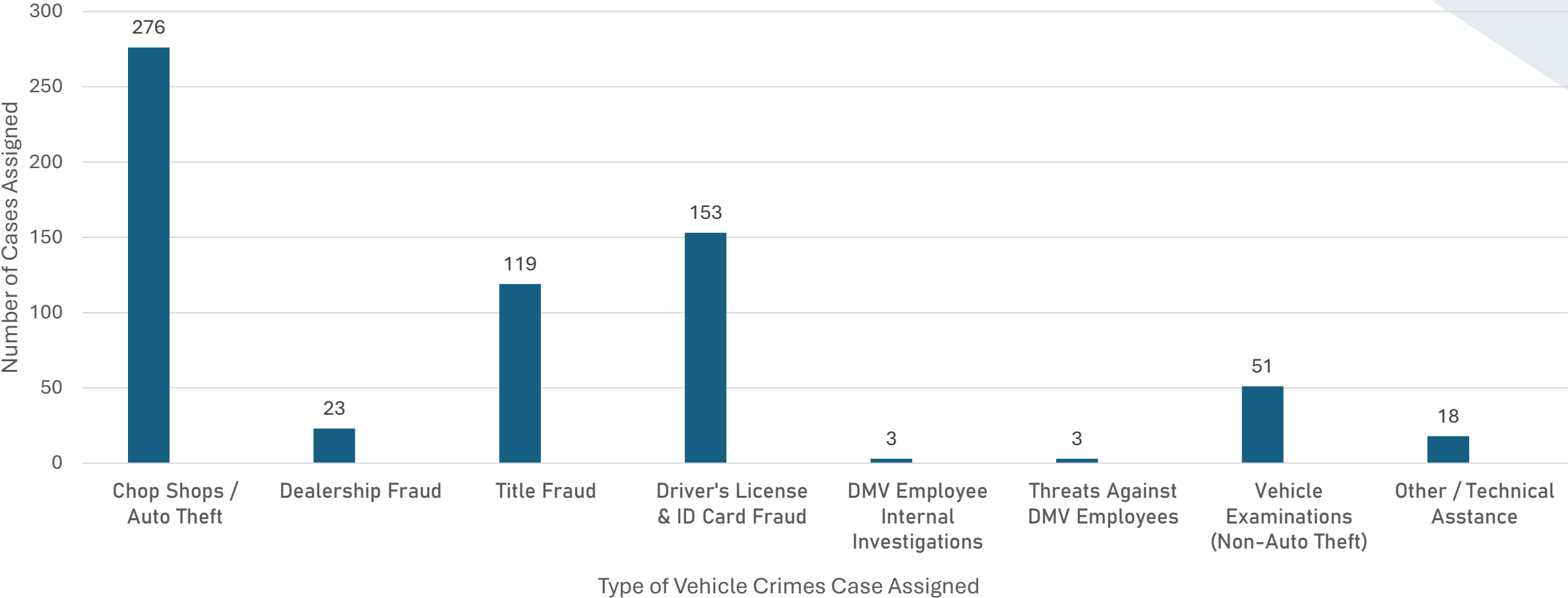
Vehicle Crimes Unit Cases Per County (2023)



Vehicle Crimes & Social Security Fraud



Example: Vehicle Crimes Case Types (2023 – 646 Total)



Vehicle Crimes & Social Security Fraud



NEIGHBORING STATE AGENCIES WITH UNITS SIMILAR TO SLED VEHICLE CRIMES UNIT

Tennessee Highway Patrol – Criminal Investigations Division

- 4 Regions comprised of a total of:
 - 1 Captain, 4 Lieutenants, 19 Sergeants, 23 Troopers (47 total)
- Multiple Federal Task Force Officers (JTTF/DEA)
- Job duties include investigations such as:
 - Motor vehicle theft / parts theft
 - Boat and airplane theft / parts theft
 - Title and registration fraud
 - Operation of chop shop investigations
 - Odometer fraud
 - Vehicular homicides and assaults
 - Insurance fraud relating to motor vehicles
 - Assists the Drivers License division of TNHP
 - Assists the Internal Affairs division of TNHP
 - Provides specialized training to other law enforcement agencies when requested

Vehicle Crimes & Social Security Fraud



NEIGHBORING STATE AGENCIES WITH UNITS SIMILAR TO SLED VEHICLE CRIMES UNIT

Georgia Department of Revenue

- Two agents- same duties as SLED Vehicle Crimes Unit. Extremely understaffed.

North Carolina DMV License and Theft Bureau

- Headquarters personnel and 7 districts comprised of:
 - 1 Colonel, 2 Lt. Colonels, 2 Majors, 10 Captains, 30 Lieutenants, 152 Agents (197 total)
 - Job duties include investigation such as:
 - Motor Vehicle Theft / Parts theft / Vehicle Inspection Fraud
 - Title Fraud / Odometer Fraud / Identity Theft
 - Car Dealerships Vehicle Safety and Emissions Inspection Stations / Vehicle Repair Businesses

Vehicle Crimes & Social Security Fraud



UNIT OVERTIME

Due to the nature of cases investigated by the unit, there is **very little overtime** generated. Most cases are not “time sensitive”, such as an officer involved shooting, so agents investigate them in the normal course of their investigative workday. Agents do generate some overtime, as all SLED agents do, working special details such as Clemson/USC football games, festivals, and crime suppression details.

CONCLUSION



The enormous volume of fraud cases involving driver's licenses and vehicle titles represent a challenge for law enforcement statewide, and specifically this unit which is tasked with the criminal investigation of cases at the SCDMV where most of the cases originate. Not unique to law enforcement in general, The Vehicle Crimes-Social Security Fraud Unit is constantly in a state of reactivity as opposed to proactivity. While making charges for violations can have positive ripple effects in some areas such as car dealership fraud, individual cases of fraud continue to increase. Counterfeiting rings that deal in driver's licenses and vehicle titles often don't get the attention needed to desist their activities due to an already large caseload and limited ability to dedicate proactive enforcement to the issue. The added increase in sophistication by criminals presents an added challenge. Social media, electronic data, and internet access provide unique avenues for criminals to commit acts of fraud and theft. This unit's upward trend in self-generating cases has made a positive impact, but more agents dedicated to the problem would obviously have a much greater impact. Like troopers on the interstate, if you're tied up working collisions, you don't catch the speeders and drunk drivers that are causing them. Cases investigated by the Social Security Fraud agents are 100% assigned and managed by the SSA, but the addition of more personnel in that area would undoubtedly have a positive impact in reducing the amount of disability fraud occurring in SC.

SLED TRAINING UNIT



Training SLED Agents and SLED employees to the highest professional standards, so they can provide quality assistance to local law enforcement and the citizens of South Carolina.

Captain Brian Truex – Investigative Services
SLED Training/K-9 Training/SLED CWP Instruction

CAPTAIN BRIAN TRUEX



- Experience:
 - Bachelors Degree from Coastal Carolina University
 - Graduate of the FBI National Academy Session 289
 - Started with the Myrtle Beach Police Department in 2001 — 2014
 - Worked patrol, narcotics, traffic enforcement, Street Crimes Supervisors, 5 years as a violent crimes Detective.
 - Came to SLED in October 2014 in the Fusion Center working Violent Fugitive Apprehension
 - Promoted to the Lieutenant of the Fugitive Unit in February 2017
 - Promoted to the Captain of Training in October 2018
 - Firearms Instructor, Driving Instructor, Patrol Rifle Instructor, Field Training Program Manager, Taser Instructor, K-9 Training Program Coordinator, CWP Instructional Unit Program Coordinator



TRAINING - SLED AGENTS

- Firearms Training – pistol and rifle
- In-Service Training (topics that change annually to fit the legal changes and needs of the Division)
- Scenario based training
- De-escalation training
- Taser training
- Cultural Diversity Training
- CPR/First Aid
- Legal updates
- Online training to support CALEA Accreditation, SCCJA Certification standards, and recertification.
- Initial training for new Agents not already sworn – pre-academy preparation





TRAINING - SLED AGENTS

- In 2024 SLED Training will conduct the following training:
 - **3200 hours** of logged training for 400 SLED Agents as part of in-service training to include: first aid, CPR, trauma care, AED, legals training, firearms fundamentals, felony traffic stops, ground defense fighting, and handcuffing. Agents also undergo a scenario-based training portion in the field to simulate a real-life scenario and practice command and control, de-escalation, and the other techniques instructed.
 - **4000 hours** of logged firearms training for 400 SLED Agents as a part of “Spring Glock”, “Fall Glock”, and “Night fire/Driving”. Agents are required to attend three four-hour blocks of firearms training throughout the year showing proficiency with all weapons they are issued and a portion on driving proficiency. Agents complete a qualification as well as a skill building portion that challenges the Agent in different situations involving their firearm (shooting from a vehicle, behind cover, etc.)
 - SLED Training hosts several professional development and advanced training courses in Columbia for SLED and other law enforcement personnel throughout South Carolina and the United States. They include: The FBI LEEDA Supervisory Trilogy, SPI 2-week homicide investigations course, Reid Interview and Interrogation, Force Science, Courtroom Testimony, Kinesic interview and Interrogation, and a Less than Lethal Munitions Instructor Course.



TRAINING - NON-SWORN EMPLOYEES

The SLED Training Unit routinely conducts training for non-sworn employees at SLED.

In 2024, SLED hosted a courtroom testimony course to assist SLED's non-sworn personnel primarily assigned to the forensics section (DNA, firearms, trace evidence, etc.) in improving their courtroom testimony when they are called upon to testify around the state.

In previous years, SLED has provided training for "Stop the Bleed", and dealing with problem people as it relates to the public on the phone or on a SLED campus and how to de-escalate them and deal with them professionally.

TRAINING - K-9 TRAINING

SLED hired a master K-9 Trainer to conduct and certify Division K-9's in the four disciplines SLED utilizes:

Explosives

Patrol/Apprehension

Narcotics

Arson — accelerant detection

SLED now trains Division K-9's from beginning to end “in-house” ensuring the highest quality K-9's and saving the State of South Carolina a significant amount of money.





TRAINING - CWP INSTRUCTION

In 2024 the SLED Training Unit was tasked with implementing the SLED sponsored “free” CWP Courses offered to the citizens of South Carolina in all 46 counties.

The Unit is comprised of two Special Agents, one Administrative Assistant, and one Finance person.

SLED has contracted with over 50 instructors across the State to provide at least two CWP classes in each county of the State every month, and in several counties more than two classes have had to be held to meet the demand.

TRAINING - DIGITAL PRODUCTIONS

SLED Training has an Agent assigned to digital format training and video productions.



Training videos are produced to efficiently educate Agents across the State without delay or having to travel for in person training.

